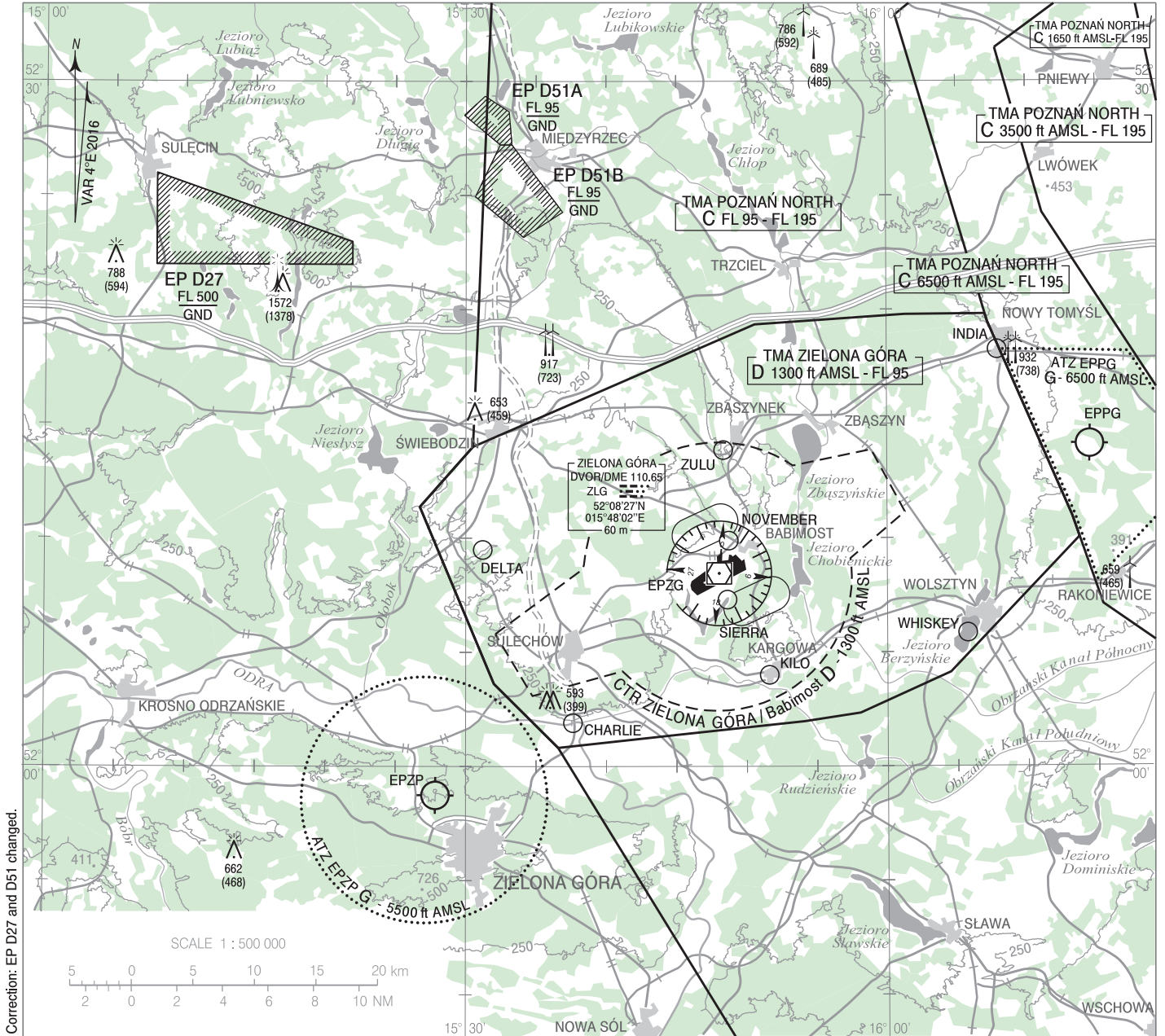


**VISUAL
OPERATION
CHART**

**AERODROME ELEV 194 ft
HEIGHTS RELATED TO AD ELEV**

Zielona Góra TOWER 118.755

Zielona Góra - Babimost



POINT ID	LATITUDE	LONGITUDE	POINT DESCRIPTION
CHARLIE	52°01'54"N	015°37'37"E	Cigacice town
DELTA	52°09'29"N	015°31'12"E	Darnawa town
INDIA	52°18'15"N	016°07'53"E	Railway station at Nowy Tomysł town
KILO	52°04'00"N	015°51'36"E	Railway station at Kargowa town
NOVEMBER	52°09'53"N	015°48'43"E	Level crossing in Babimost
SIERRA	52°07'18"N	015°48'37"E	North-eastern part of Wojnowskie Lake
WHISKEY	52°05'51"N	016°05'43"E	Southern edge of Berzyńskie Lake
ZULU	52°13'51"N	015°48'20"E	Railway bridge near Zbąszynek town