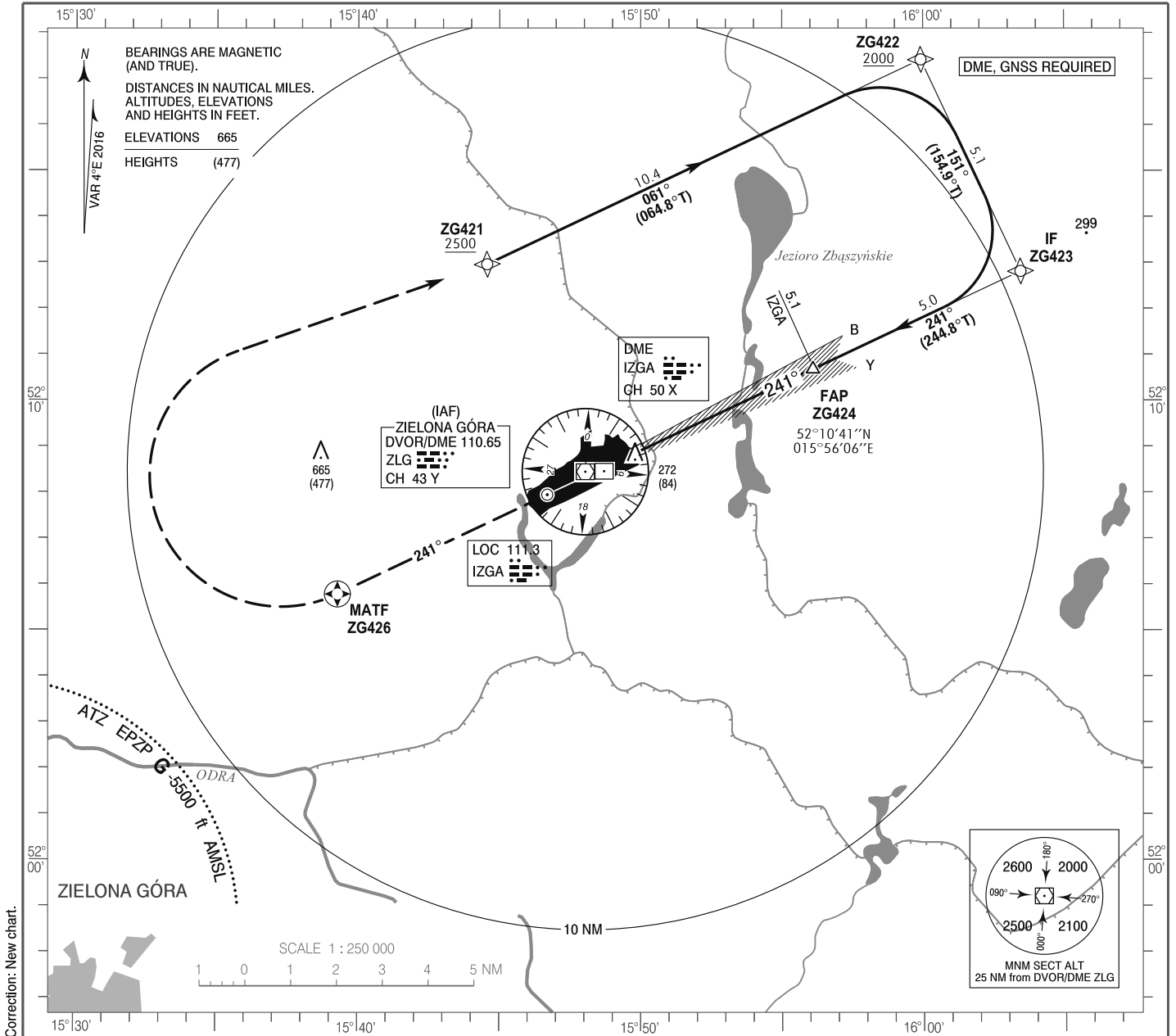


**INSTRUMENT
APPROACH
CHART - ICAO**

AERODROME ELEV 194 ft
THR RWY 24 ELEV 188 ft
HEIGHTS RELATED TO THR RWY 24

Poznań APPROACH 129.030
Zielona Góra TOWER 118.755
FIS Poznań 126.300

**Zielona Góra - Babimost
ILS z
RWY 24 (CAT A/B/C/D)**

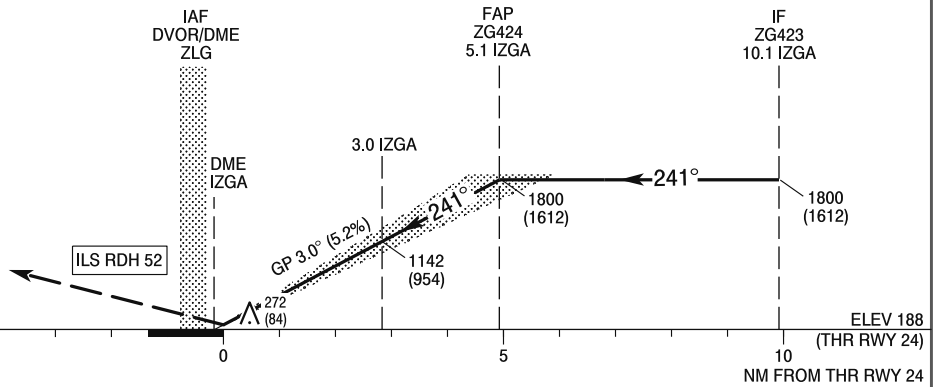


Correction: New chart.

MISSED APPROACH

Climb on course 241° to ZG426
then turn right to ZG421
climbing to 2500 (2312).
Further instructions from ATC.
Turn limited to 220 kt IAS max.

TRANSITION ALTITUDE 6500



OCA (OCH)					Distance FAP - RW24 4.9 NM								
Cat. of ACFT	Cat. I	A	B	C	D	Speed	kt	80	100	120	140	160	180
		Straight - in		388 (200)	400 (212)	408 (220)	419 (231)	Time	min : s	3 : 41	2 : 57	2 : 28	2 : 07
						Rate of descent	ft / min	420	530	630	740	840	950
					Final approach distance / altitude (height)								
Circling (OCH AAL)		680 (486)	750 (556)	960 (766)	1060 (866)	Distance		5	4	3	2		
						Altitude (height)		1780 (1592)	1460 (1272)	1150 (962)	830 (642)		

**ZIELONA GÓRA/Babimost
 ILS z RWY 24 (CAT A/B/C/D)**

EPZG RNAV (GNSS) RWY 24 INITIAL transition from ZG421

SEQUENCE NUMBER	PATH TERMINATOR	WAYPOINT IDENTIFIER	FLY - OVER	COURSE/TRACK °M (°T)	DISTANCE (NM)	TURN DIRECTION	ALTITUDE	SPEED (kt)	VPA/TCH	NAV SPEC
001	IF	ZG421	-	-	-	-	+2500 ft	-230	-	RNP 1
002	TF	ZG422	-	61 (64.81)	10.45	R	+2000 ft	-	-	RNP 1
003	TF	ZG423	-	151 (154.86)	5.10	R	+1800 ft	-	-	RNP 1

EPZG RNAV (GNSS) RWY 24 MISSED APPROACH transition

SEQUENCE NUMBER	PATH TERMINATOR	WAYPOINT IDENTIFIER	FLY - OVER	COURSE/TRACK °M (°T)	DISTANCE (NM)	TURN DIRECTION	ALTITUDE	SPEED (kt)	VPA/TCH	NAV SPEC
005	-	RWY24	-	-	-	-	-	-	-	RNP 1
006	CF	ZG426	Y	241 (244.68)	6.57	-	-	-	-	RNP 1
007	DF	ZG421	-	-	15.07	R	+2500 ft	-220	-	RNP 1

WAYPOINT IDENTIFIER	COORDINATES		FIX FORMATION	
ZG421 (IAF)	52°12'58.2"N	015°44'33.6"E	-	-
ZG422	52°17'25.6"N	015°59'55.8"E	-	-
ZG423 (IF)	52°12'49.0"N	016°03'27.5"E	244.86°GEO (241°MAG) LOC IZGA	10.07 NM DME IZGA
ZG424 (FAP)	52°10'41.4"N	015°56'05.9"E	244.76°GEO (241°MAG) LOC IZGA	5.07 NM DME IZGA
RWY24	52°08'36.0"N	015°48'54.2"E	-	-
ZG426 (MATF)	52°05'47.2"N	015°39'16.7"E	-	-