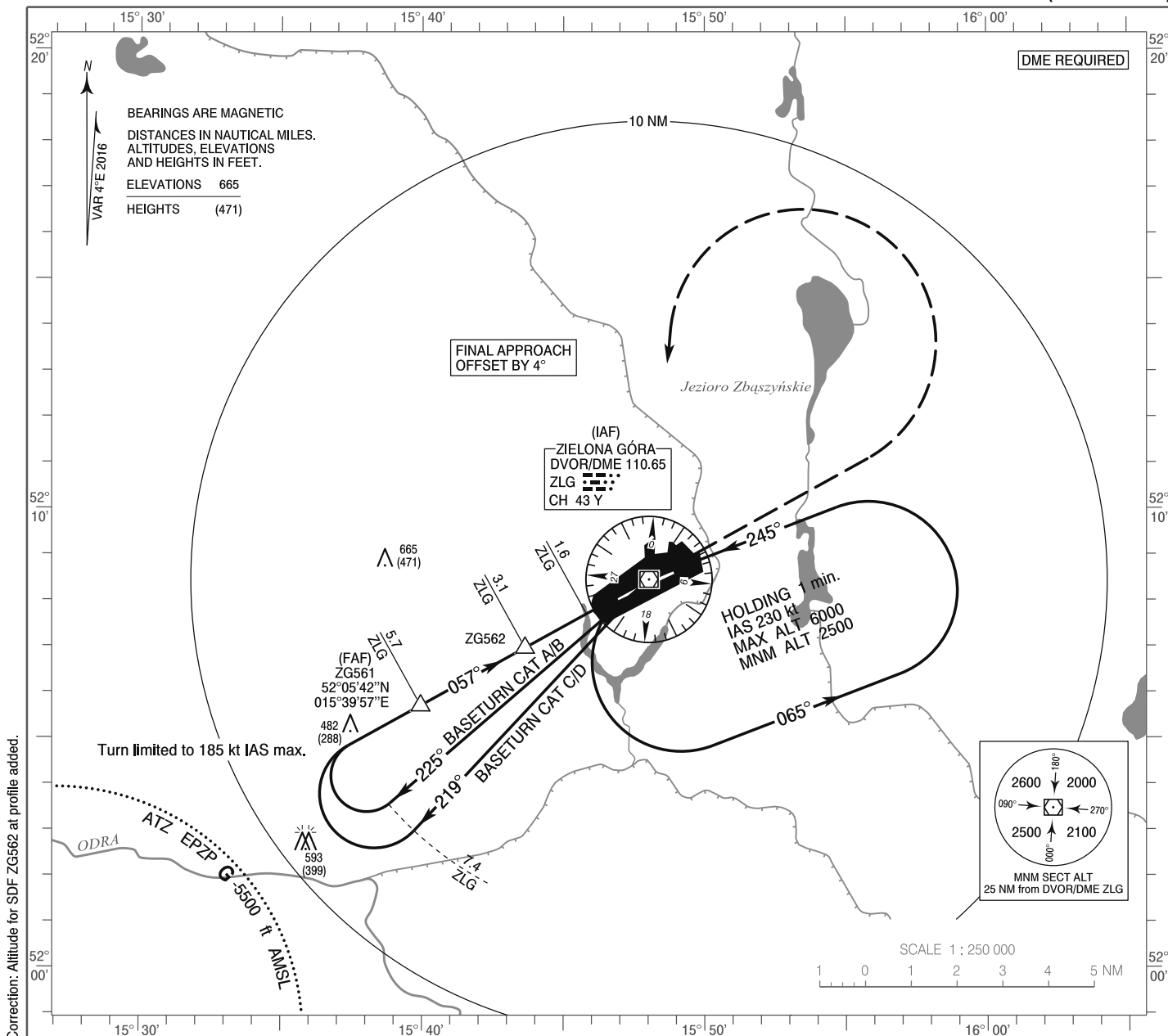


**INSTRUMENT
APPROACH
CHART - ICAO**

AERODROME ELEV 194 ft
THR RWY 06 ELEV 194 ft
HEIGHTS RELATED TO AD ELEV

Poznań APPROACH 129.030
Zielona Góra TOWER 118.755
FIS Poznań 126.300

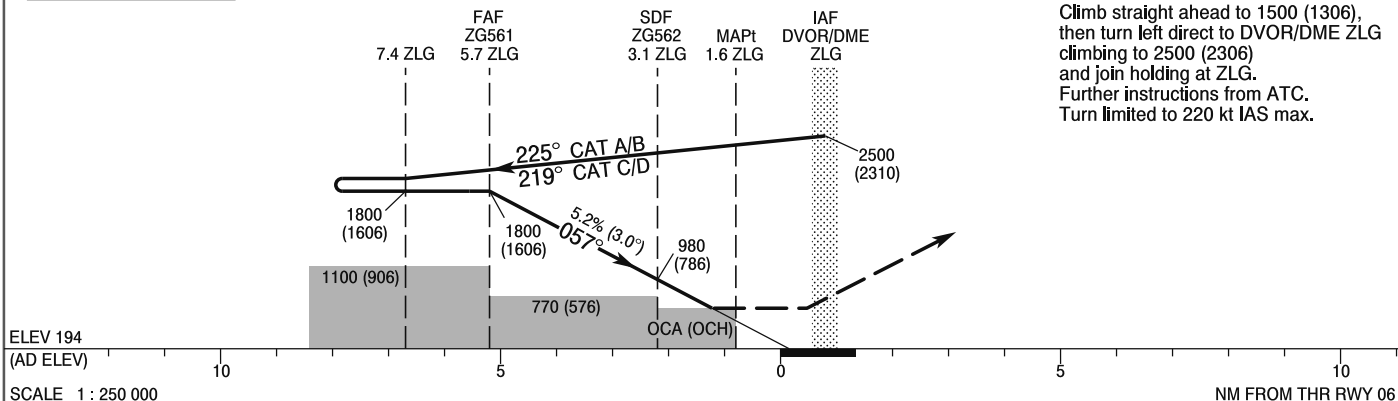
**Zielona Góra - Babimost
VOR
RWY 06 (CAT A/B/C/D)**



TRANSITION ALTITUDE 6500

MISSED APPROACH

Climb straight ahead to 1500 (1306), then turn left direct to DVOR/DME ZLG climbing to 2500 (2306) and join holding at ZLG. Further instructions from ATC. Turn limited to 220 kt IAS max.



OCA (OCH)					Distance FAF - MAPt 4.1 NM							
Cat. of ACFT	A	B	C	D	Speed	kt	80	100	120	140	160	180
	Straight-in	640 (446)	640 (446)	640 (446)	640 (446)	Time	min : s	3 : 06	2 : 29	2 : 04	1 : 46	1 : 33
When stepdown fix not received				Rate of descent	ft / min	430	540	640	750	850	960	
770 (576)		770 (576)	770 (576)		770 (576)	Final approach distance/altitude (height)						
Circling	680 (486)	750 (556)	960 (766)	1060 (866)	Distance		5	4	3	2		
					Altitude (height)		1580 (1386)	1260 (1066)	940 (746)	630 (436)		

**INSTRUMENT
APPROACH
CHART - ICAO**

**Zielona Góra - Babimost
VOR
RWY 06 (CAT A/B/C/D)**

FIX / POINT	LATITUDE	LONGITUDE	FIX FORMATION	
IAF DVOR/DME ZLG	52°08'27.3"N	015°48'02.5"E		
FAF ZG561	52°05'42.1"N	015°39'57.1"E	241.11° GEO (237° MAG) DVOR ZLG	5.70 NM DME ZLG
SDF ZG562	52°06'57.5"N	015°43'38.3"E	241.11° GEO (237° MAG) DVOR ZLG	3.10 NM DME ZLG
MAPt	52°07'41.9"N	015°45'48.8"E	241.11° GEO (237° MAG) DVOR ZLG	1.57 NM DME ZLG
Final approach descent angle: 3.00°				