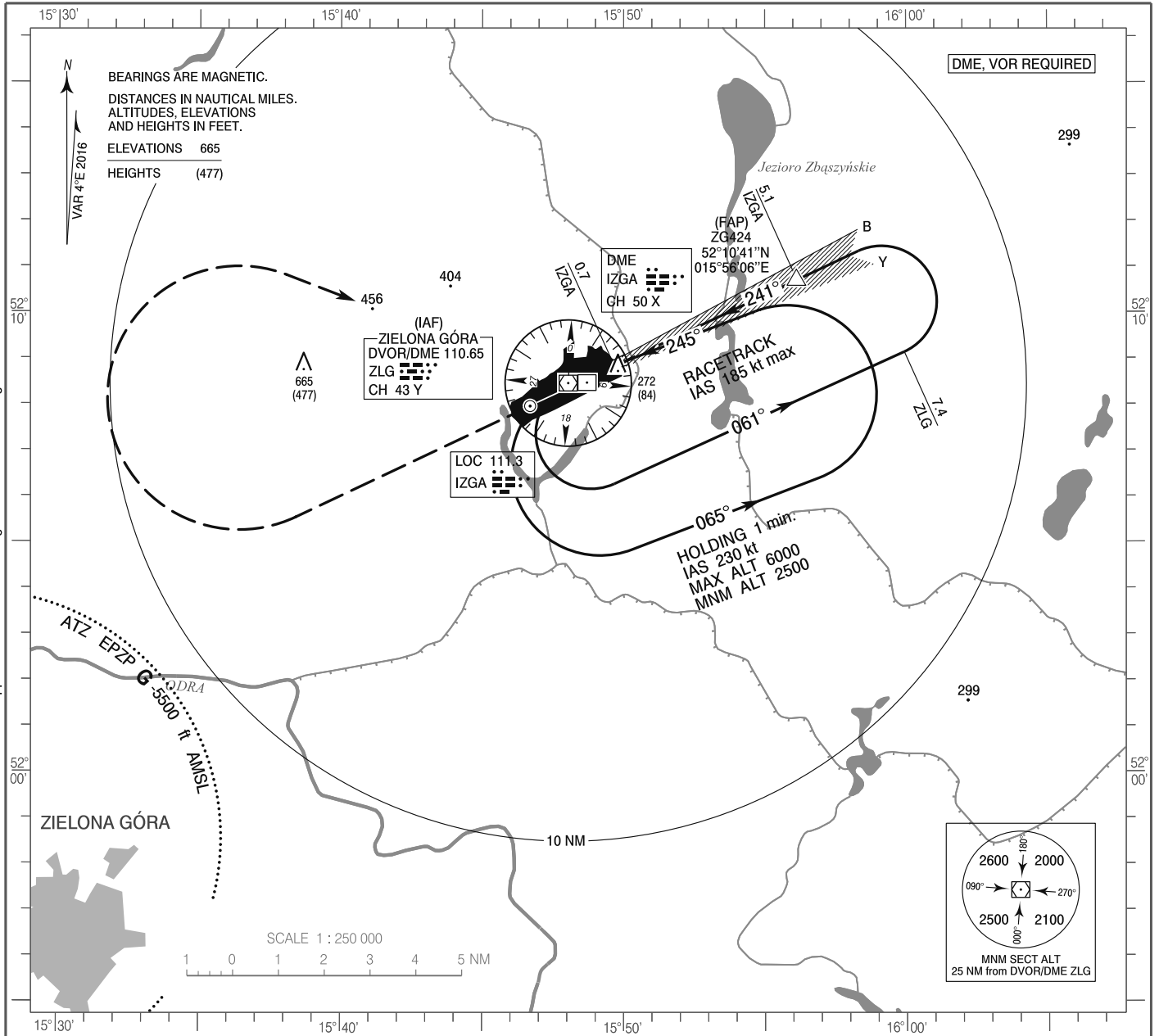


**INSTRUMENT
APPROACH
CHART - ICAO**

AERODROME ELEV 194 ft
THR RWY 24 ELEV 188 ft
HEIGHTS RELATED TO THR RWY 24

Poznań APPROACH 129.030
Zielona Góra TOWER 118.755
FIS Poznań 126.300

**Zielona Góra - Babimost
ILS y or LOC y
RWY 24 (CAT A/B/C/D)**

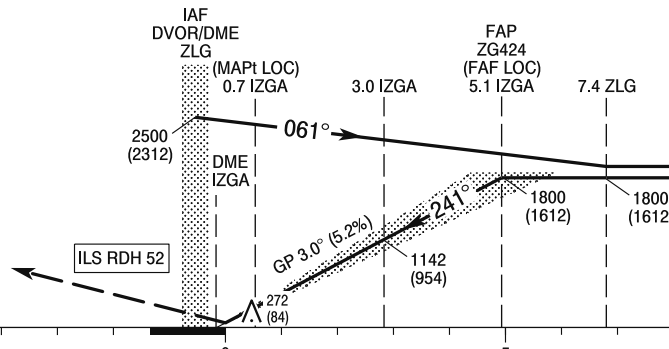


Correction: FAF name, FAF and MAPt definition. Missed approach. Obstacles. Circling minima. Editorial changes.

MISSED APPROACH

Climb straight ahead to 1300 (1112)
then turn right to DVOR/DME ZLG
climbing to 2500 (2312)
and join holding at ZLG.
Further instructions from ATC.
Turn limited to 220 kt IAS max.

TRANSITION ALTITUDE 6500



SCALE 1 : 250 000

NM FROM THR RWY 24

OCA (OCH)					Distance FAF - MAPt 4.4 NM								
Cat. of ACFT		A	B	C	D	Speed	kt	80	100	120	140	160	180
		Straight - in	Cat. I	388 (200)	400 (212)	408 (220)	419 (231)	Time	min : s	3 : 17	2 : 37	2 : 11	1 : 52
LOC	600 (412)		600 (412)	600 (412)	600 (412)	Rate of descent	ft / min	430	540	640	750	850	960
		Final approach distance / altitude (height)											
Circling (OCH AAL)		680 (486)	750 (556)	960 (766)	1060 (866)	Distance		5	4	3	2		
						Altitude (height)		1780 (1592)	1460 (1272)	1140 (952)	820 (632)		

**INSTRUMENT
APPROACH
CHART - ICAO**

**Zielona Góra - Babimost
ILS y or LOC y
RWY 24 (CAT A/B/C/D)**

FIX / POINT	LATITUDE	LONGITUDE	FIX FORMATION	
IAF DVOR/DME ZLG	52°08'27.3"N	015°48'02.5"E		
FAP ZG424 (FAF LOC)	52°10'41.4"N	015°56'05.9"E	244.76° GEO (241° MAG) LOC IZGA	5.07 NM DME IZGA
MAPt (LOC)	52°08'49.5"N	015°49'40.8"E	244.76° GEO (241° MAG) LOC IZGA	0.70 NM DME IZGA
Final approach descent angle: 3.00°				