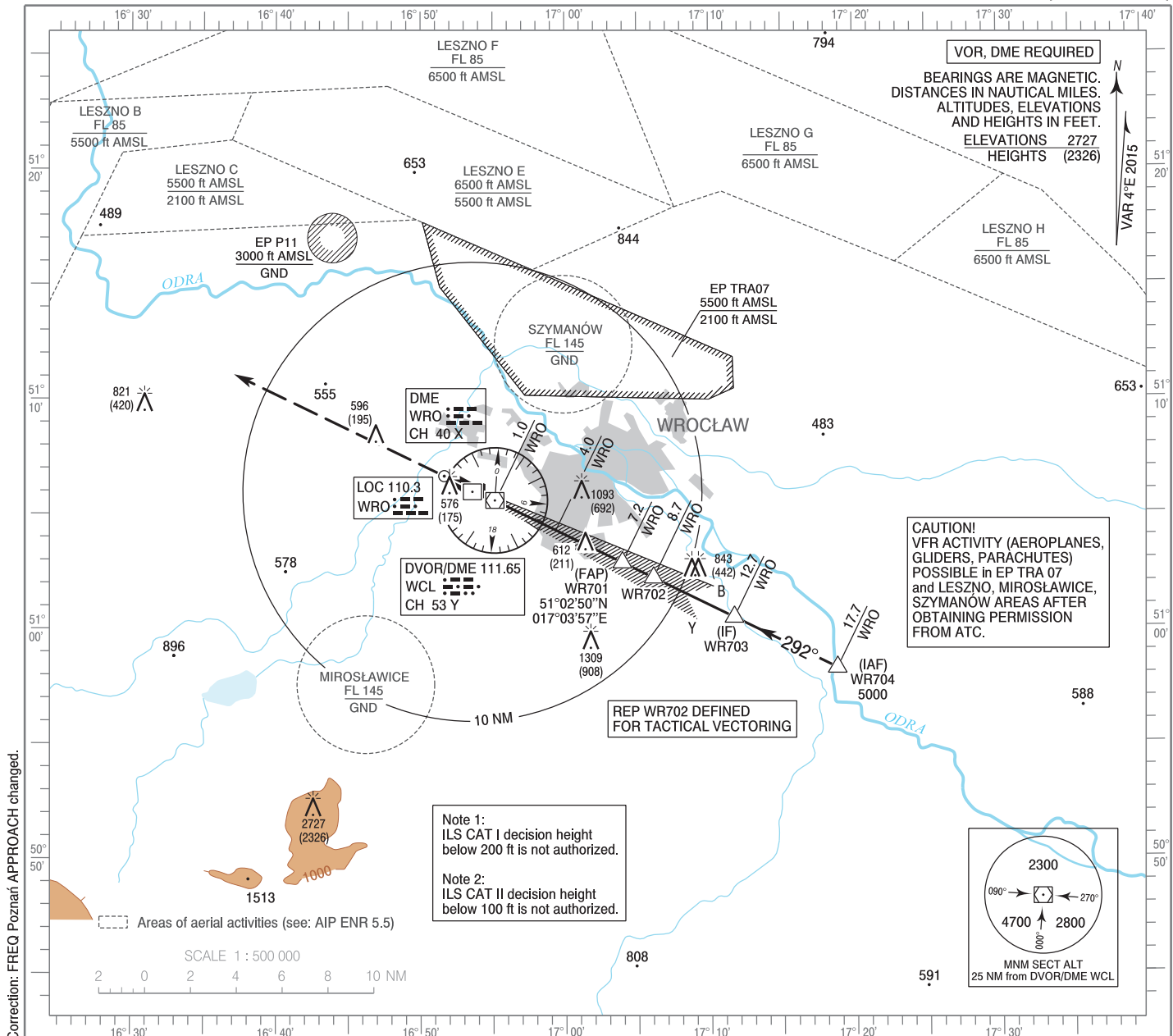


**INSTRUMENT
APPROACH
CHART - ICAO**

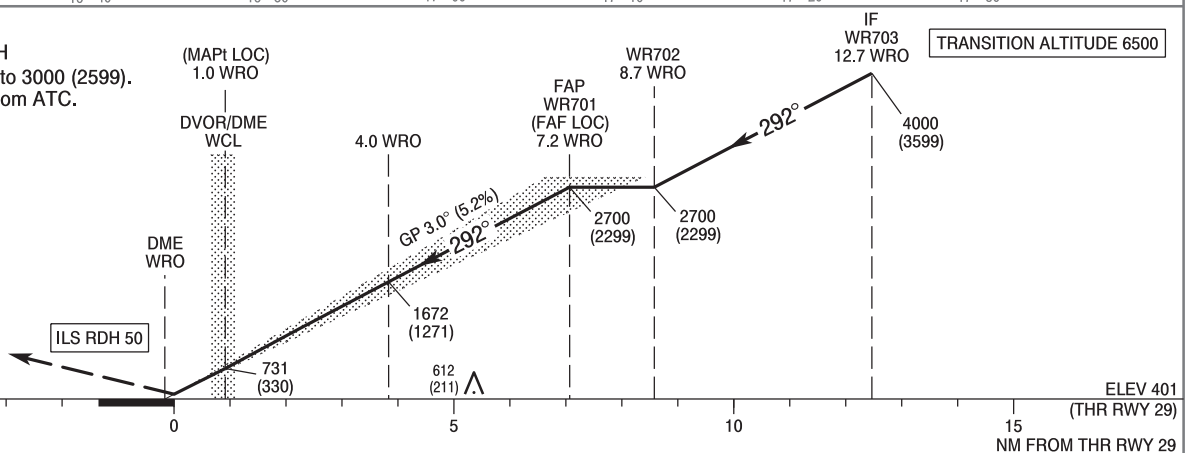
AERODROME ELEV 406 ft
THR RWY 29 ELEV 401 ft
HEIGHTS RELATED TO THR RWY 29

Poznań APPROACH 123.040, 128.925
Wrocław TOWER 120.255
ATIS 124.330

**Wrocław - Strachowice
ILS CAT II or LOC
RWY 29 (CAT A/B/C/D)**



MISSED APPROACH
Climb straight ahead to 3000 (2599).
Further instructions from ATC.



Cat. of ACFT	OCA (OCH)				Distance FAF - MAPt 6.2 NM								
	A	B	C	D	Speed	kt	80	100	120	140	160	180	
Straight-in	Cat. I	565 (164)	577 (176)	585 (184)	596 (195)	Time	min : s	4 : 38	3 : 43	3 : 06	2 : 39	2 : 19	2 : 04
	Cat. II	477 (76)	494 (93)	506 (105)	520 (119)	Rate of descent	ft / min	430	540	640	750	850	960
	LOC	860 (460)	860 (460)	860 (460)	860 (460)	Final approach distance / altitude (height)							
Circling* (OCH AAL)	880 (474)	900 (494)	1000 (594)	1100 (694)	Distance	6	5	4	3	2			
*Circling south of aerodrome only.					Altitude (height)	2310 (1909)	1990 (1589)	1680 (1279)	1360 (959)	1040 (639)			

**INSTRUMENT
APPROACH
CHART - ICAO**

**Wrocław - Strachowice
ILS CAT II or LOC
RWY 29 (CAT A/B/C/D)**

FIX / POINT	LATITUDE	LONGITUDE	FIX FORMATION	
IAF WR704	50°58'15.0"N	017°18'44.8"E	296.28° GEO (292° MAG) LOC WRO	17.65 NM DME WRO
IF WR703	51°00'27.4"N	017°11'38.9"E	296.19° GEO (292° MAG) LOC WRO	12.65 NM DME WRO
WR702	51°02'10.8"N	017°06'05.0"E	296.11° GEO (292° MAG) LOC WRO	8.74 NM DME WRO
FAP WR701 (FAF LOC)	51°02'50.4"N	017°03'56.8"E	296.09° GEO (292° MAG) LOC WRO	7.23 NM DME WRO
MAP _t (LOC)	51°05'33.2"N	016°55'07.9"E	295.97° GEO (292° MAG) LOC WRO	1.05 NM DME WRO
Final approach descent angle: 3.00°				