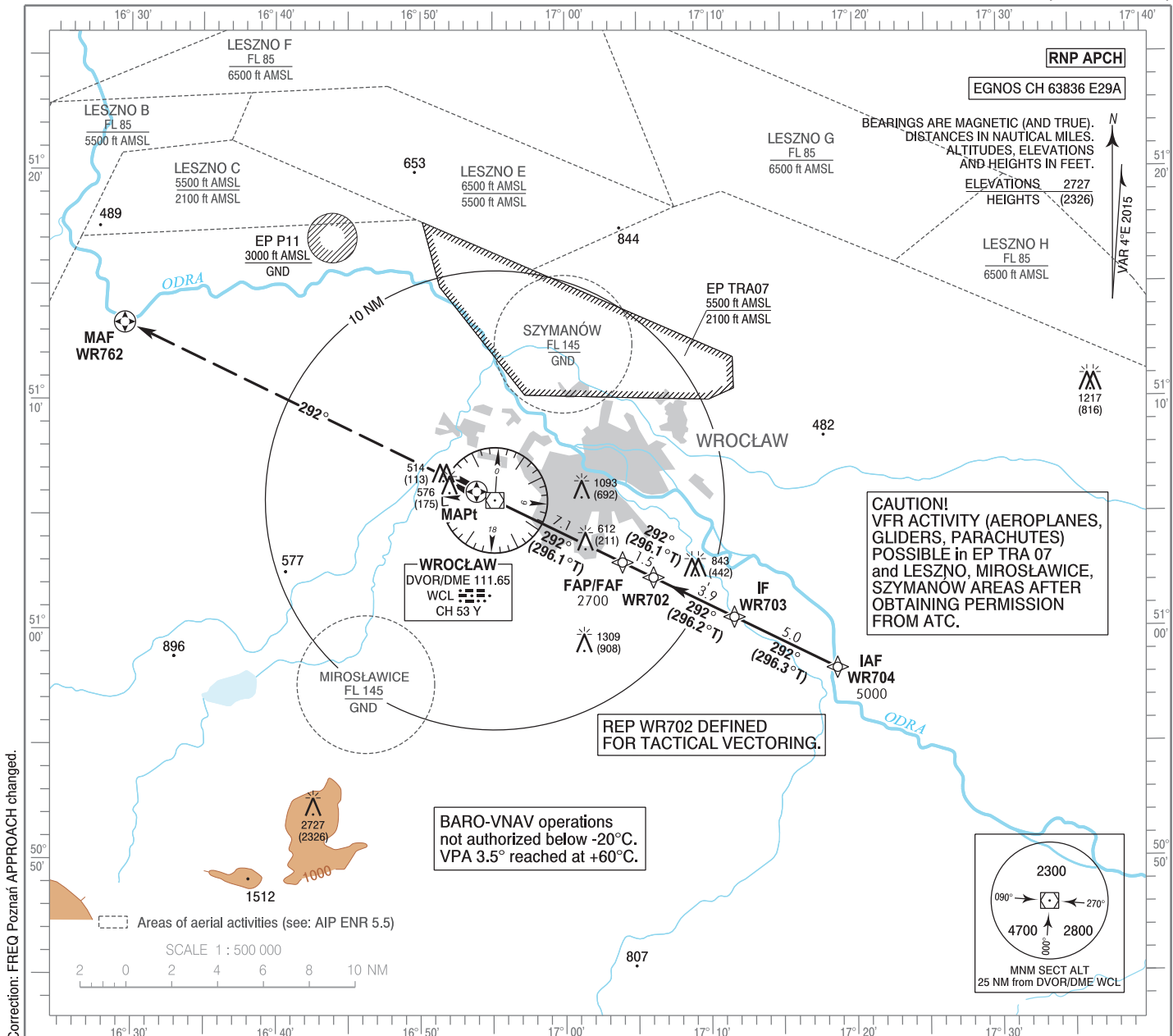


**INSTRUMENT
APPROACH
CHART - ICAO**

AERODROME ELEV 406 ft
THR RWY 29 ELEV 401 ft
HEIGHTS RELATED TO THR RWY 29

Poznań APPROACH 123.040, 128.925
Wrocław TOWER 120.255
ATIS 124.330

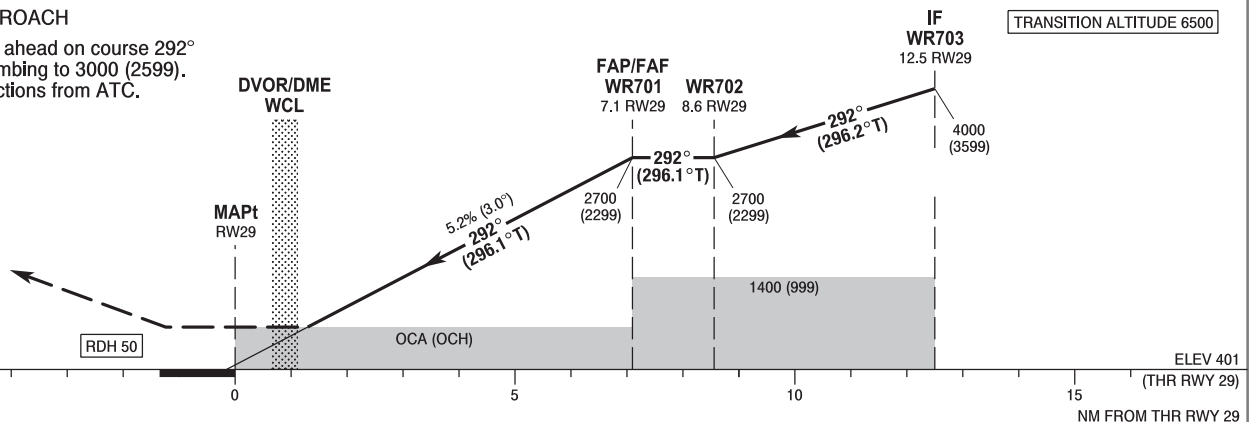
**Wrocław - Strachowice
RNP
RWY 29 (CAT A/B/C/D)**



Correction: FREQ Poznań APPROACH changed.

MISSED APPROACH

Climb straight ahead on course 292° to WR762, climbing to 3000 (2599). Further instructions from ATC.



OCA (OCH)					Distance FAF - MAPt 7.1 NM								
Cat. of ACFT	A	B	C	D	Speed	kt	80	100	120	140	160	180	
Straight-in	LNAV	860 (459)	860 (459)	860 (459)	860 (459)	Time	min : s	5 : 19	4 : 15	3 : 33	3 : 02	2 : 40	2 : 22
	LNAV / VNAV	690 (289)	700 (299)	710 (309)	720 (319)	Rate of descent	ft / min	420	530	630	740	840	950
	LPV	596 (195)	609 (208)	617 (216)	627 (226)	Final approach distance/altitude (height)							
Circling (OCH AAL)*	880 (474)	900 (494)	1000 (594)	1100 (694)	Distance		6	4	2				
*Circling south of aerodrome only.					Altitude (height)		2360 (1959)	1730 (1329)	1100 (699)				