

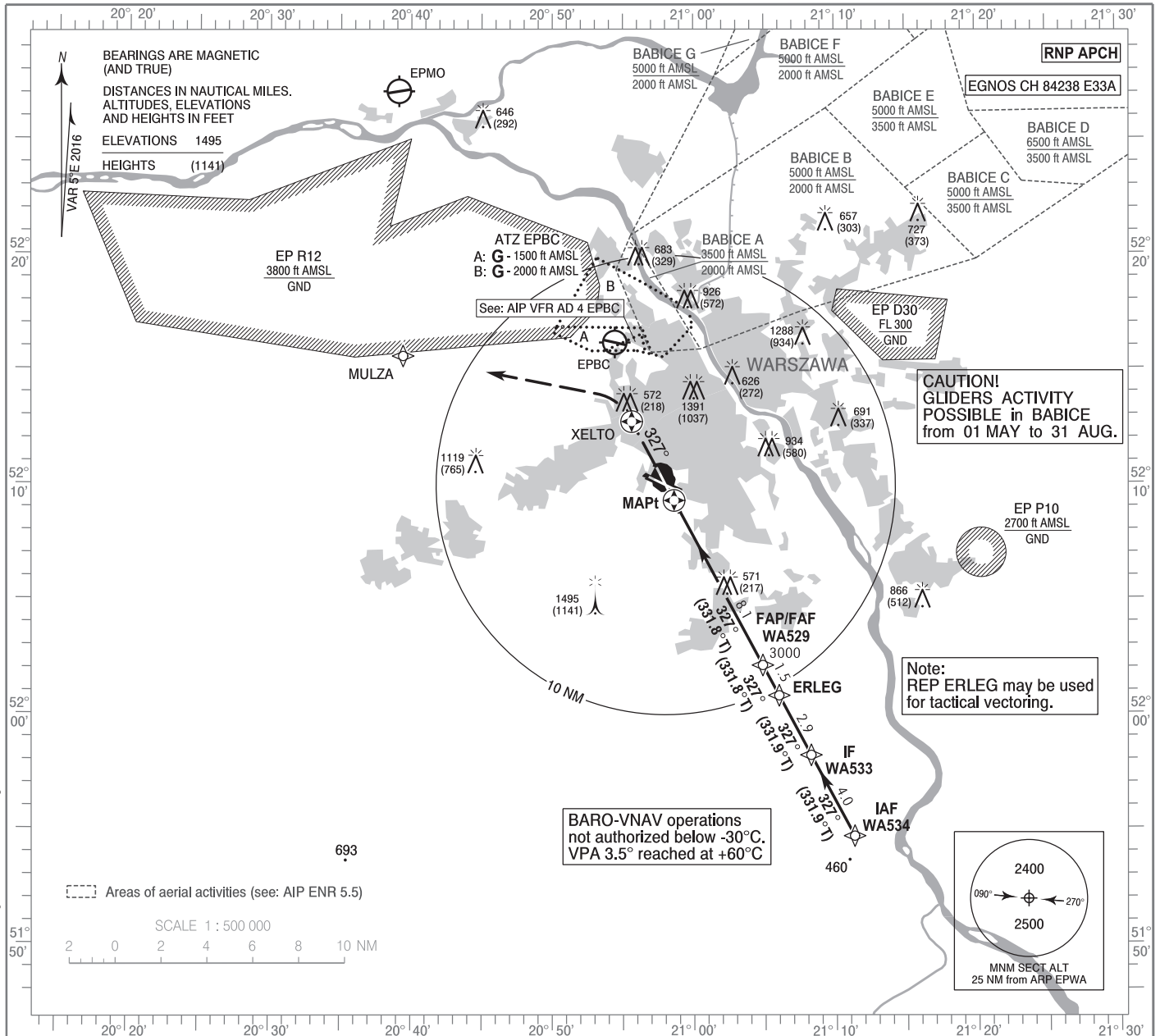
**INSTRUMENT
APPROACH
CHART - ICAO**

AERODROME ELEV 362 ft
THR RWY 33 ELEV 354 ft
HEIGHTS RELATED TO THR RWY 33

Warszawa APPROACH	128.805	Warszawa DIRECTOR	129.380
ATIS	125.055	Okęcie TOWER	118.305
	120.455	Okęcie GROUND	121.905

WARSAW CHOPIN AIRPORT

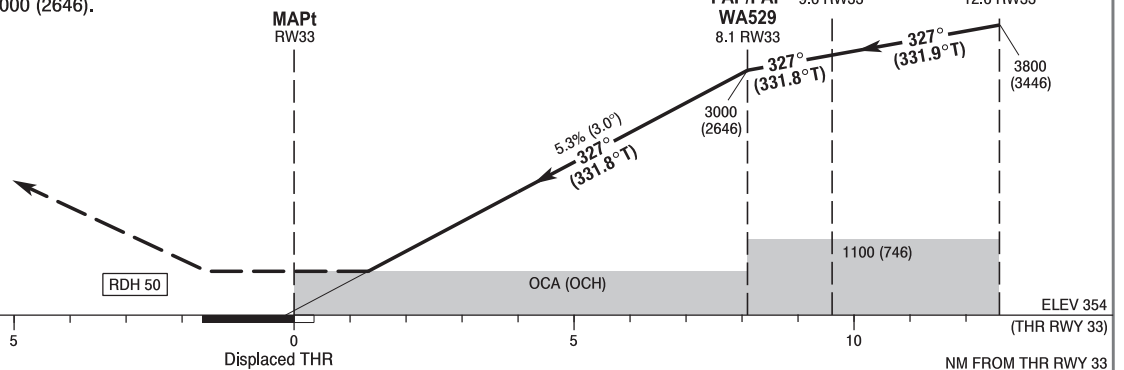
**RNP
RWY 33 (CAT A/B/C/D)**



MISSED APPROACH

Climb on course 327° to XELTO, turn left to MULZA climbing to 3000 (2646). Further instructions from ATC. Turn limited to 185 kt IAS max only if XELTO crossed below 2000 (1646).

TRANSITION ALTITUDE 6500



OCA (OCH)					Distance FAF - MAPt 8.1 NM							
Cat. of ACFT	A	B	C	D	Speed	kt	80	100	120	140	160	
Straight - in	LNAV	820 (466)	820 (466)	820 (466)	820 (466)	Time	min : s	6:07	4:53	4:05	3:30	3:04
	LNAV / VNAV	640 (286)	650 (296)	660 (306)	670 (316)	Rate of descent	ft / min	420	530	630	740	850
	LPV	554 (200)	566 (212)	574 (220)	585 (231)	Final approach distance/altitude (height)						
Circling approaches are prohibited					Distance	8	6	4	2			
					Altitude (height)	2960 (2606)	2320 (1966)	1680 (1326)	1050 (696)			

STRONA WOLNA

INTENTIONALLY LEFT BLANK

WARSAW CHOPIN AIRPORT
RNP
RWY 33 (CAT A/B/C/D)

EPWA RNP RWY 33 FROM WA534

SEQUENCE NUMBER	PATH TERMINATOR	WAYPOINT IDENTIFIER	FLY - OVER	COURSE/TRACK °M (°T)	DISTANCE (NM)	TURN DIRECTION	ALTITUDE	SPEED (kt)	VPA/TCH	NAV SPEC
001	IF	WA534	-	-	-	-	-	-220	-	RNP APCH
002	TF	WA533	-	327 (331.87)	4.00	-	+3800 ft	-	-	RNP APCH
003	TF	ERLEG	-	327 (331.88)	2.94	-	-	-	-	RNP APCH
004	TF	WA529	-	327 (331.83)	1.51	-	+3000 ft	-	-	RNP APCH
005	TF	RW33	Y	327 (331.75)	8.14	-	@404 ft	-	-3.0/50	RNP APCH
006	CF	XELTO	Y	327 (331.75)	4.10	-	-	-185*	-	RNP APCH
007	DF	MULZA	-	-	-	L	+3000 ft	-185*	-	RNP APCH

* - restriction applied only if XELTO crossed below 2000 (1646)

WAYPOINT IDENTIFIER	COORDINATES	
WA534 (IAF)	51°54'40.1"	021°11'17.8"
WA533 (IF)	51°58'11.5"	021°08'15.1"
ERLEG	52°00'47.2"	021°06'00.2"
WA529 (FAP/FAF)	52°02'06.8"	021°04'51.0"
RW33 (MAPt)	52°09'16.5"	020°58'36.8"
XELTO (MATF)	52°12'42.4"	020°55'37.2"
MULZA (MAF)	52°15'33.3"	020°39'25.8"

SBAS FAS Data Block Coding Data

EPWA RNP RWY 33	
Input Data	
Parameters	Values
Operation Type:	0
SBAS Provider:	1
Airport Identifier:	EPWA
Runway:	33
Runway Direction:	0
Approach Performance Designator:	0
Route Indicator:	
Reference Path Data Selector:	0
Reference Path Identifier:	E33A
LTP/FTP Latitude:	520916.5200N
LTP/FTP Longitude:	0205836.7500E
LTP/FTP Ellipsoidal Height (metres):	139.5
FPAP Latitude:	521042.8600N
Delta FPAP Latitude (seconds):	86.3400
FPAP Longitude:	0205721.2700E
Delta FPAP Longitude (seconds):	-75.4800
Threshold Crossing Height:	50.0
TCH Units Selector:	0
Glidepath Angle (degrees):	3.00
Course Width (metres):	105.00
Length Offset (metres):	304
HAL (metres):	40.0
VAL (metres):	35.0

Output Data	
Data Block	10 01 17 10 05 21 00 00 01 33 33 05 D0 DF 61 16 9C 96 00 09 73 19 88 A2 02 50 B2 FD F4 01 2C 01 64 26 C8 AF 5B 6A 38 48
Calculated CRC Value	5B6A3848

Required Additional Data (not CRC wrapped)	
ICAO Code	WA
LTP/FTP Orthometric Height (metres)	108.0