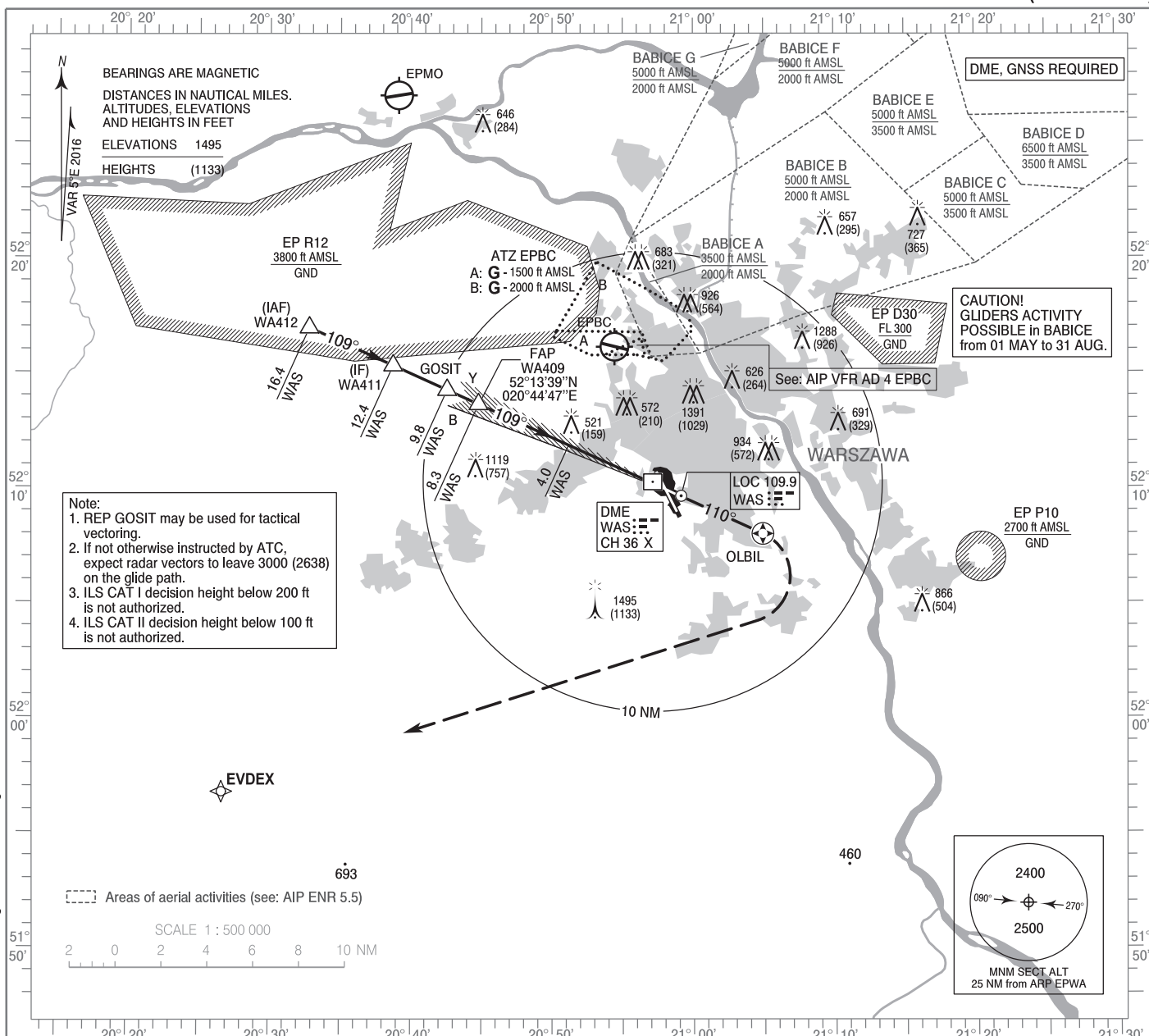


**INSTRUMENT  
APPROACH  
CHART - ICAO**

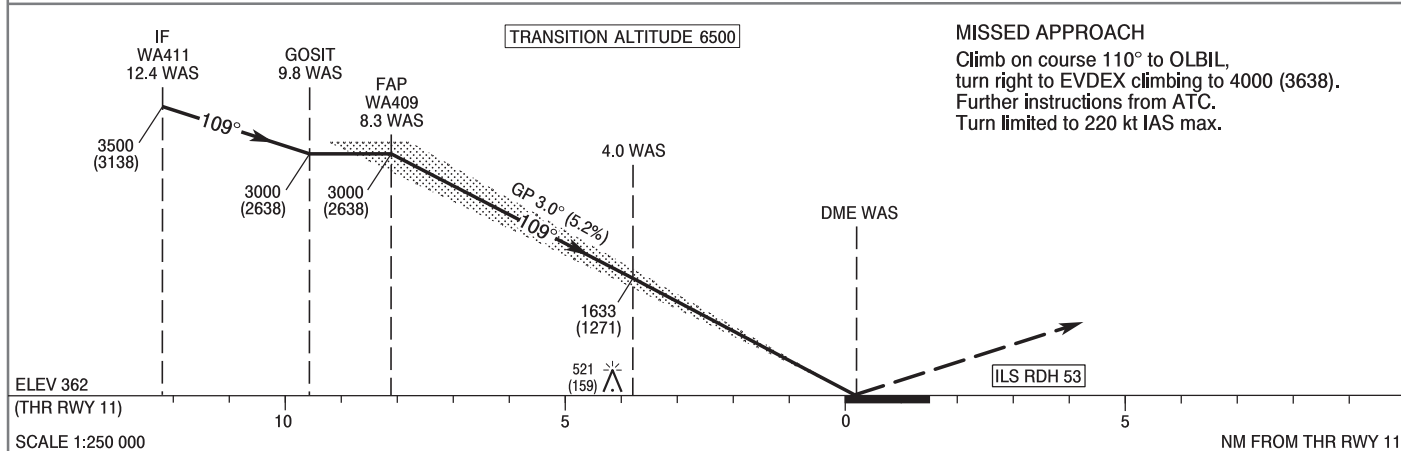
AERODROME ELEV 362 ft  
THR RWY 11 ELEV 362 ft  
HEIGHTS RELATED TO THR RWY 11

Warszawa APPROACH	128.805	Warszawa DIRECTOR	129.380
ATIS	125.055	Okęcie TOWER	118.305
	120.455	Okęcie GROUND	121.905

**WARSAW CHOPIN AIRPORT  
ILS y CAT II  
RWY 11 (CAT A/B/C/D)**



Correction: MSA changed. Obstacle changed.



OCA (OCH)					Distance FAP - RW11 8.1 NM								
Cat. of ACFT		A	B	C	D	Speed	kt	80	100	120	140	160	180
		Straight - in	Cat. I	561 (199)	573 (211)	581 (219)	592 (230)	Time	min : s	6 : 06	4 : 53	4 : 04	3 : 29
Cat. II	440 (78)		457 (95)	470 (108)	483 (121)	Rate of descent	ft / min	420	530	630	740	840	950
Circling approaches are prohibited						Final approach distance/altitude (height)							
						Distance		8	6	4	2		
						Altitude (height)		2910 (2548)	2270 (1908)	1640 (1278)	1000 (638)		

**WARSAW CHOPIN AIRPORT**  
**ILS y CAT II**  
**RWY 11 (CAT A/B/C/D)**

**EPWA RNAV (GNSS) RWY 11 MISSED APPROACH**

SEQUENCE NUMBER	PATH TERMINATOR	WAYPOINT IDENTIFIER	FLY - OVER	COURSE/TRACK °M (°T)	DISTANCE (NM)	TURN DIRECTION	ALTITUDE	SPEED (kt)	VPA/TCH	NAV SPEC	REMARKS
001	-	RW11	-	-	-	-	-	-	-	RNAV1	-
002	CF	OLBIL	Y	110 (114.51)	5.49	-	-	-220	-	RNAV1	-
003	DF	EVDEX	-	-	-	-	+4000 ft	-220	-	RNAV1	-

WAYPOINT IDENTIFIER	COORDINATES		FIX FORMATION	
WA412 (IAF)	52°16'57.7"N	020°32'48.0"E	114.20° GEO (119° MAG) LOC WAS	16.38 NM DME WAS
WA411 (IF)	52°15'19.3"N	020°38'44.3"E	114.28° GEO (109° MAG) LOC WAS	12.38 NM DME WAS
GOSIT	52°14'15.7"N	020°42'33.9"E	114.36° GEO (109° MAG) LOC WAS	9.79 NM DME WAS
WA409 (FAP)	52°13'38.6"N	020°44'47.3"E	114.36° GEO (109° MAG) LOC WAS	8.29 NM DME WAS
RW11	52°10'17.3"N	020°56'48.2"E	-	-
OLBIL (MATF)	52°08'00.5"N	021°04'54.5"E	-	-
EVDEX (MAF)	51°56'46.5"N	020°26'40.6"E	-	-