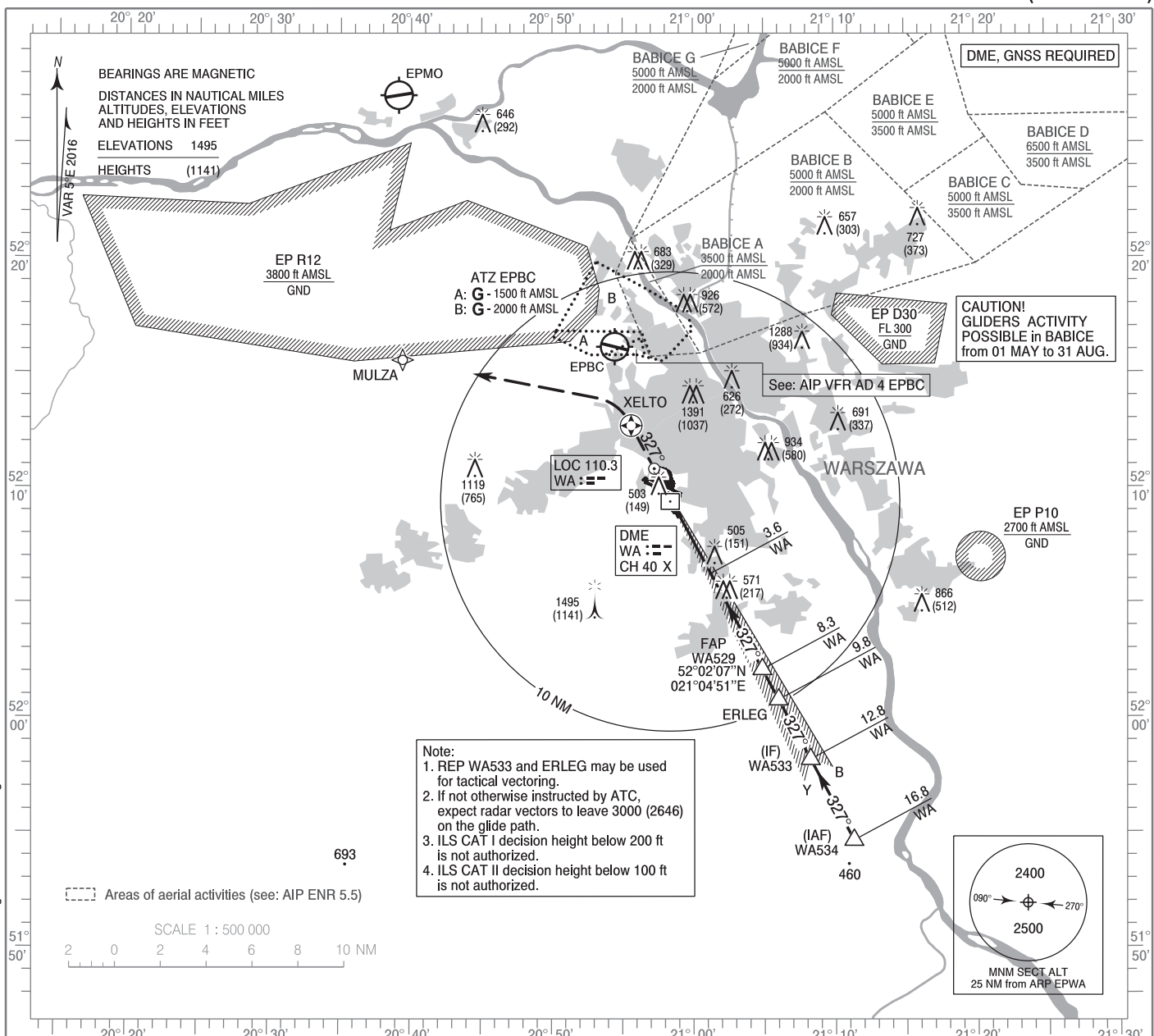


**INSTRUMENT  
APPROACH  
CHART - ICAO**

AERODROME ELEV 362 ft  
THR RWY 33 ELEV 354 ft  
HEIGHTS RELATED TO THR RWY 33

Warszawa APPROACH	128.805	Warszawa DIRECTOR	129.380
ATIS	125.055	Okęcie TOWER	118.305
	120.455	Okęcie GROUND	121.905

**WARSAW CHOPIN AIRPORT  
ILS y CAT II & III  
RWY 33 (CAT A/B/C/D)**

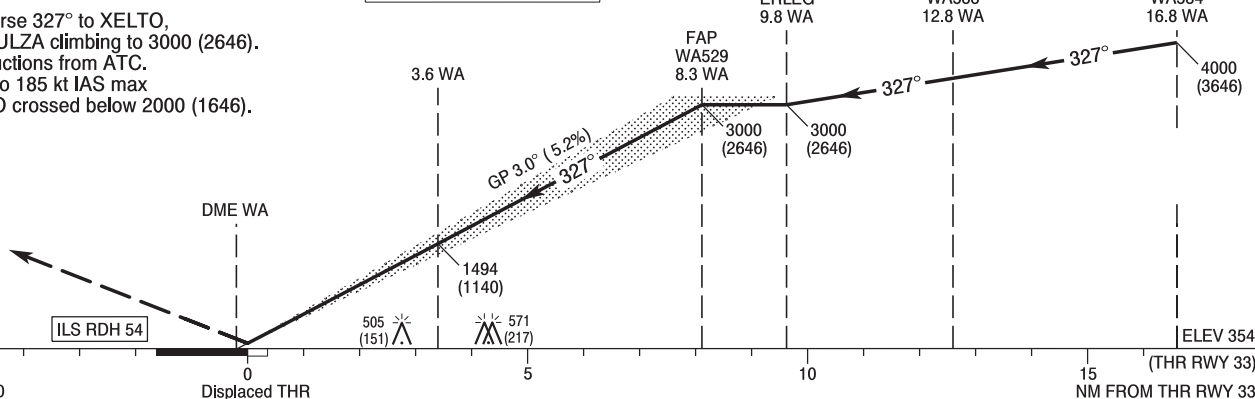


Correction: MSA changed. Obstacle changed.

**MISSED APPROACH**

Climb on course 327° to XELTO, turn left to MULZA climbing to 3000 (2646). Further instructions from ATC. Turn limited to 185 kt IAS max only if XELTO crossed below 2000 (1646).

TRANSITION ALTITUDE 6500



OCA (OCH)		A	B	C	D	Distance FAP - RW33 8.1 NM							
Straight - in	Cat. I	537 (183)	549 (195)	557 (203)	568 (214)	Speed	kt	80	100	120	140	160	180
	Cat. II	426 (72)	443 (89)	455 (101)	469 (115)	Time	min : s	6 : 07	4 : 53	4 : 05	3 : 30	3 : 04	2 : 43
						Rate of descent	ft / min	420	530	630	740	840	950
ILS CAT IIIA approved.						Final approach distance/altitude (height)							
Circling approaches are prohibited						Distance		8	6	4	2		
						Altitude (height)		2900 (2546)	2270 (1916)	1630 (1276)	990 (636)		

**WARSAW CHOPIN AIRPORT**  
**ILS y CAT II & III**  
**RWY 33 (CAT A/B/C/D)**

**EPWA RNAV (GNSS) RWY 33 MISSED APPROACH**

SEQUENCE NUMBER	PATH TERMINATOR	WAYPOINT IDENTIFIER	FLY - OVER	COURSE/TRACK °M (°T)	DISTANCE (NM)	TURN DIRECTION	ALTITUDE	SPEED (kt)	VPA/TCH	NAV SPEC	REMARKS
001	-	RW33	-	-	-	-	-	-	-	RNAV1	-
002	CF	XELTO	Y	327 (331.83)	3.90	-	-	-185*	-	RNAV1	-
003	DF	MULZA	-	-	-	-	+3000 ft	-185*	-	RNAV1	-

\* - restriction applied only if XELTO crossed below 2000 (1646)

WAYPOINT IDENTIFIER	COORDINATES		FIX FORMATION	
WA534 (IAF)	51°54'40.1"N	021°11'17.8"E	331.73° GEO (327° MAG) LOC WA	16.78 NM DME WA
WA533 (IF)	51°58'11.5"N	021°08'15.1"E	331.73° GEO (327° MAG) LOC WA	12.78 NM DME WA
ERLEG	52°00'47.2"N	021°06'00.2"E	331.73° GEO (327° MAG) LOC WA	9.83 NM DME WA
WA529 (FAP)	52°02'06.8"N	021°04'51.0"E	331.73° GEO (327° MAG) LOC WA	8.32 NM DME WA
RW33	52°09'16.5"N	020°58'36.8"E	-	-
XELTO (MATF)	52°12'42.4"N	020°55'37.2"E	-	-
MULZA (MAF)	52°15'33.3"N	020°39'25.8"E	-	-