

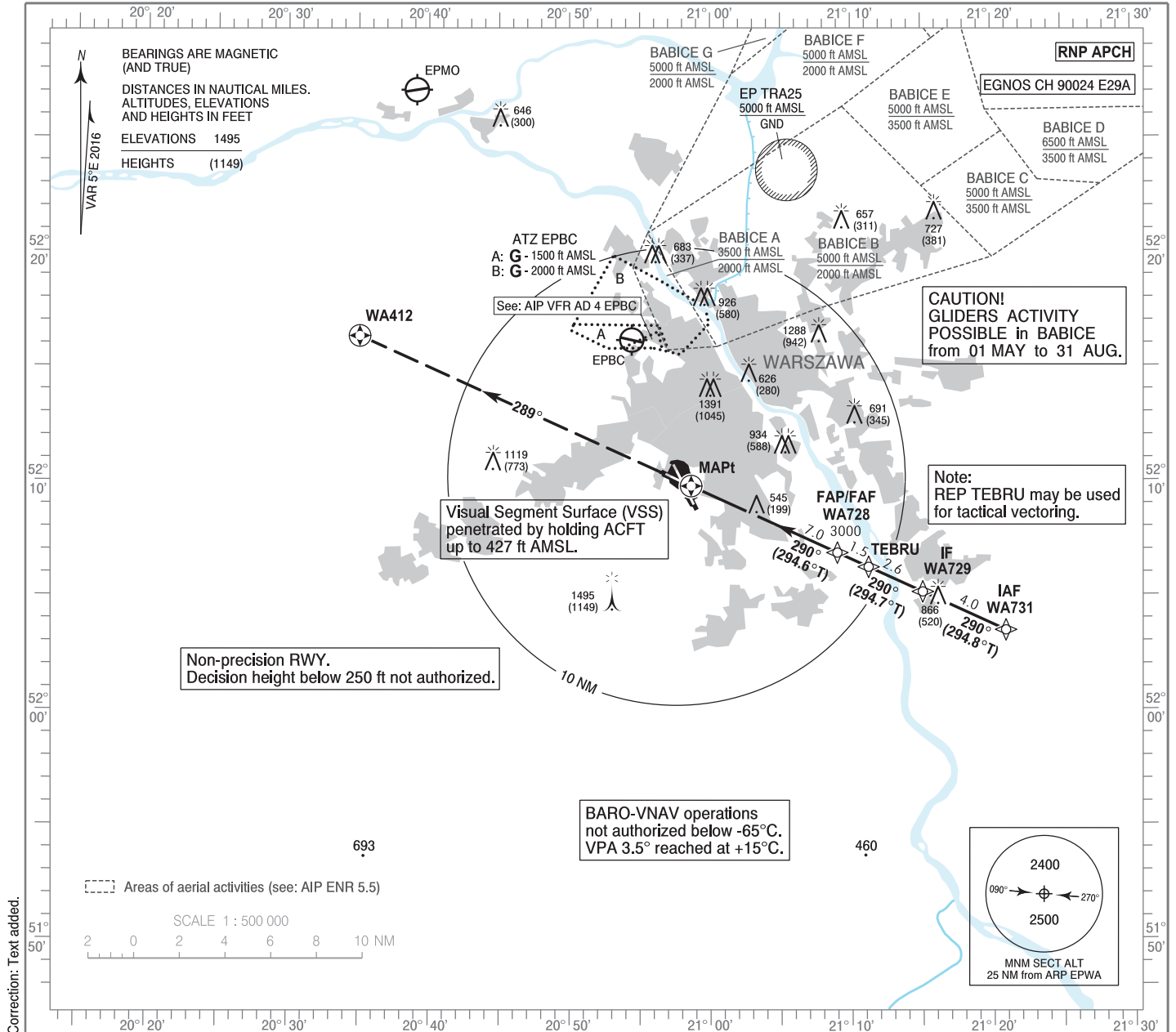
**INSTRUMENT
APPROACH
CHART - ICAO**

AERODROME ELEV 362 ft
THR RWY 29 ELEV 346 ft
HEIGHTS RELATED TO THR RWY 29

Warszawa APPROACH	128.805	Warszawa DIRECTOR	129.380
ATIS	125.055	Okecie TOWER	118.305
	120.455	Okecie GROUND	121.905

WARSAW CHOPIN AIRPORT

**RNP
RWY 29 (CAT A/B/C/D)**

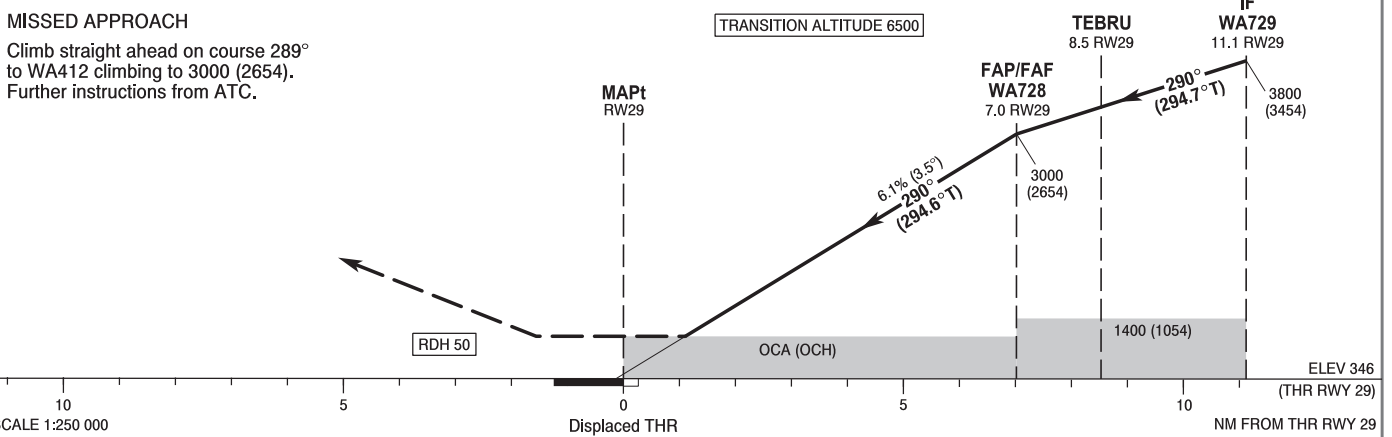


Correction: Text added.

MISSED APPROACH

Climb straight ahead on course 289° to WA412 climbing to 3000 (2654). Further instructions from ATC.

TRANSITION ALTITUDE 6500



SCALE 1:250 000

OCA (OCH)					Distance FAF - MAPt 7.0 NM							
Cat. of ACFT	A	B	C	D	Speed	kt	80	100	120	140	160	
Straight - in	LNAV	800 (454)	800 (454)	800 (454)	800 (454)	Time	min : s	5:17	4:13	3:31	3:01	2:39
	LNAV/VNAV	640 (294)	660 (314)	670 (324)	680 (334)	Rate of descent	ft / min	490	610	740	860	980
	LPV	560 (214)	574 (228)	584 (238)	597 (251)		Final approach distance/altitude (height)					
Circling approaches are prohibited					Distance	6	5	4	3			
					Altitude (height)	2620 (2274)	2250 (1904)	1880 (1534)	1510 (1164)			