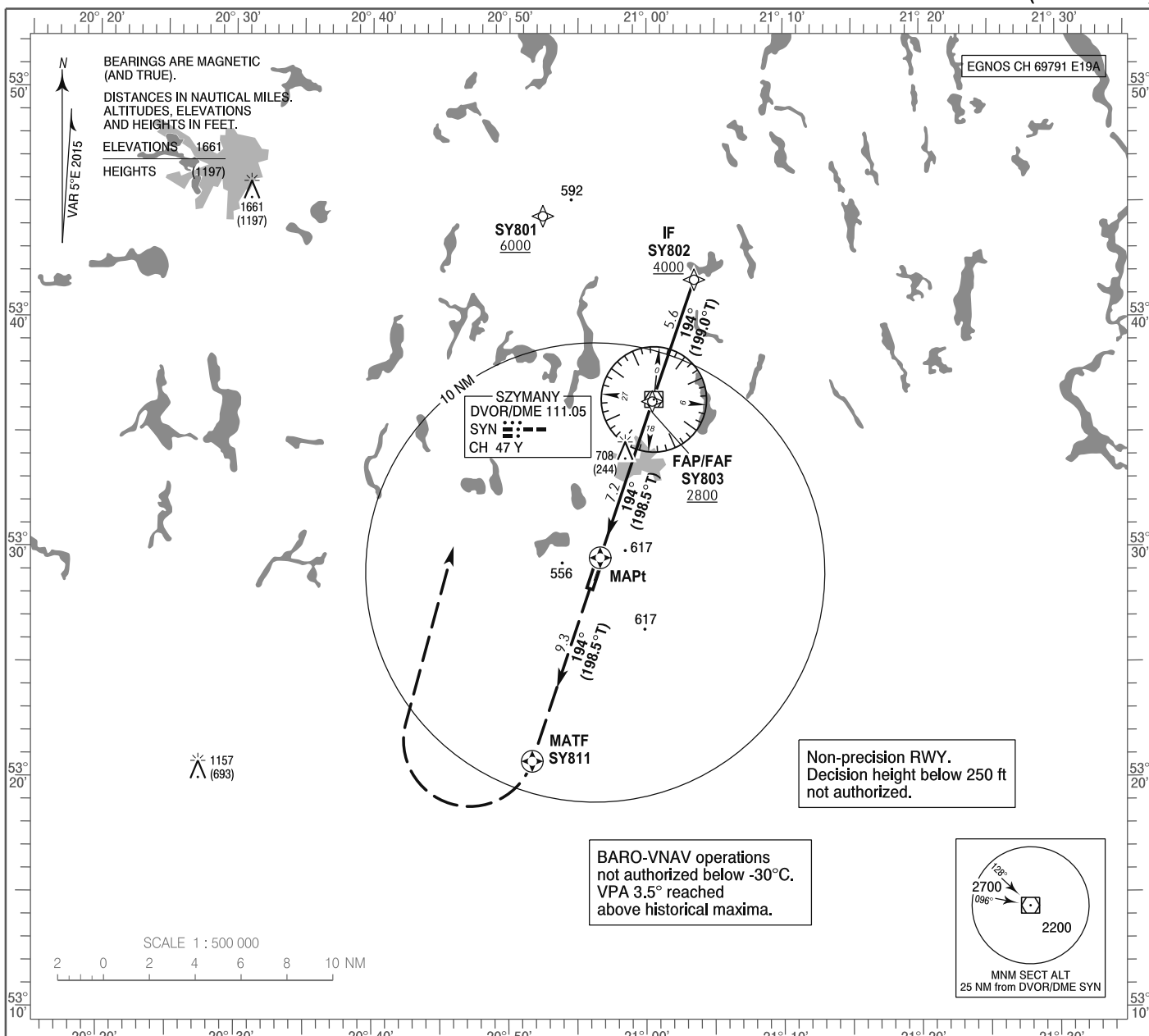


**INSTRUMENT
APPROACH
CHART - ICAO**

AERODROME ELEV 464 ft
THR RWY 19 ELEV 464 ft
HEIGHTS RELATED TO THR RWY 19

Mazury TOWER 118.030
Mazury INFORMATION 118.030
Mazury RADIO 118.030

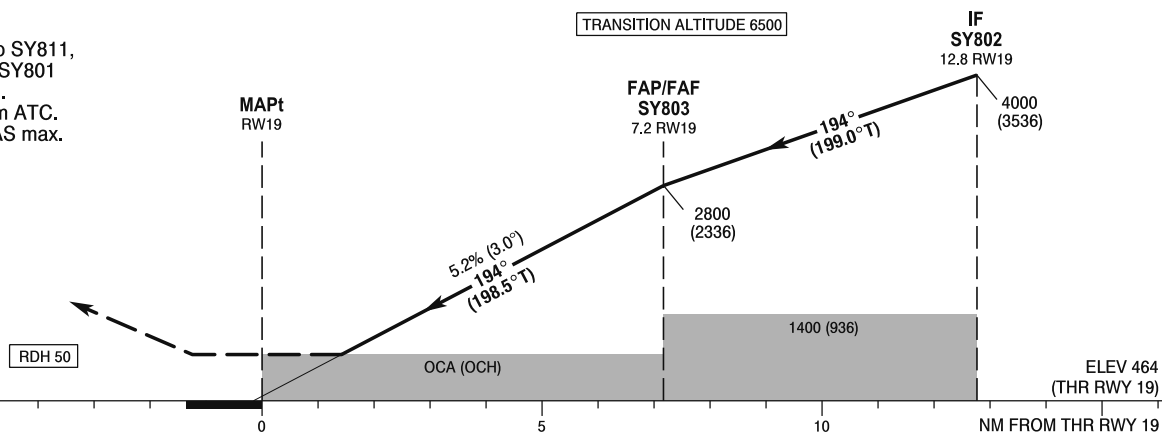
**Olsztyn - Mazury
RNAV (GNSS)
RWY 19 (CAT A/B/C/D)**



Correction: LNAV/VNAV OCA/H changed. FREQ changed.

MISSED APPROACH

Climb on course 194° to SY811, then turn right direct to SY801 climbing to 6000 (5536). Further instructions from ATC. Turn limited to 220 kt IAS max.



OCA (OCH)					Distance FAF - MAPt 7.2								
Cat. of ACFT		A	B	C	D	Speed	kt	80	100	120	140	160	180
		Straight - in	LNAV	960 (496)	960 (496)	960 (496)	960 (496)	Time	min : s	5 : 23	4 : 18	3 : 35	3 : 04
LNAV / VNAV	710 (246)		720 (256)	730 (266)	740 (276)	Rate of descent	ft / min	420	530	630	740	840	950
LPV	652 (188)		664 (200)	672 (208)	683 (219)			Final approach distance/altitude (height)					
Circling (OCH AAL)*		970 (506)	970 (506)	1060 (596)	1160 (696)	Distance	7	6	5	4	3	2	
*A/c cat. C and D circling west of AD only.						Altitude (height)	2750 (2286)	2430 (1966)	2110 (1646)	1790 (1326)	1470 (1006)	1160 (696)	