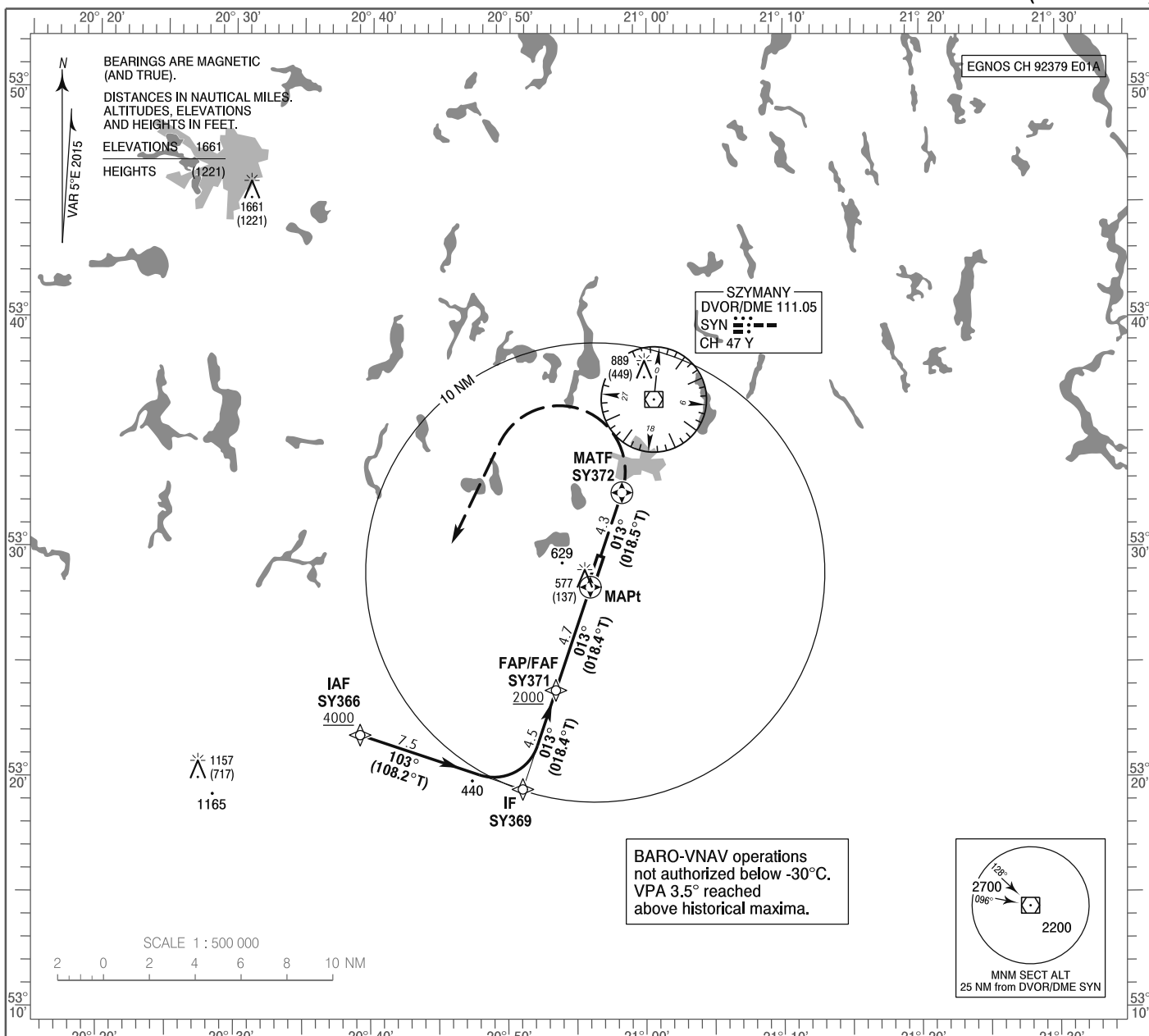


**INSTRUMENT
APPROACH
CHART - ICAO**

AERODROME ELEV 464 ft
THR RWY 01 ELEV 440 ft
HEIGHTS RELATED TO THR RWY 01

Mazury TOWER 118.030
Mazury INFORMATION 118.030
Mazury RADIO 118.030

**Olsztyn - Mazury
RNAV (GNSS)
RWY 01 (CAT A/B/C/D)**

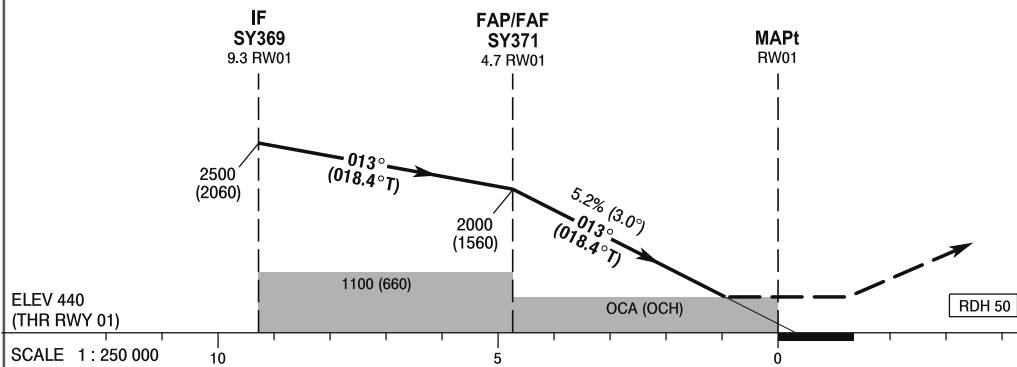


Correction: FREQ changed.

TRANSITION ALTITUDE 6500

MISSED APPROACH

Climb on course 013° to SY372, then turn left direct to SY366 climbing to 4000 (3560). Further instructions from ATC. Turn limited to 220 kt IAS max.



OCA (OCH)					Distance FAF - MAPt 4.7								
Cat. of ACFT	A	B	C	D	Speed	kt	80	100	120	140	160	180	
Straight-in	LNAV	830 (390)	830 (390)	830 (390)	830 (390)	Time	min : s	3 : 33	2 : 51	2 : 22	2 : 02	1 : 47	1 : 35
	LNAV / VNAV	710 (270)	720 (280)	730 (290)	740 (300)	Rate of descent	ft / min	420	530	630	740	850	950
	LPV	614 (174)	626 (186)	634 (194)	645 (205)		Final approach distance/altitude (height)						
Circling (OCH AAL)*	960 (496)	960 (496)	1060 (596)	1160 (696)	Distance		4	3	2				
*A/c cat. C and D circling west of AD only.					Altitude (height)		1770 (1330)	1450 (1010)	1130 (690)				