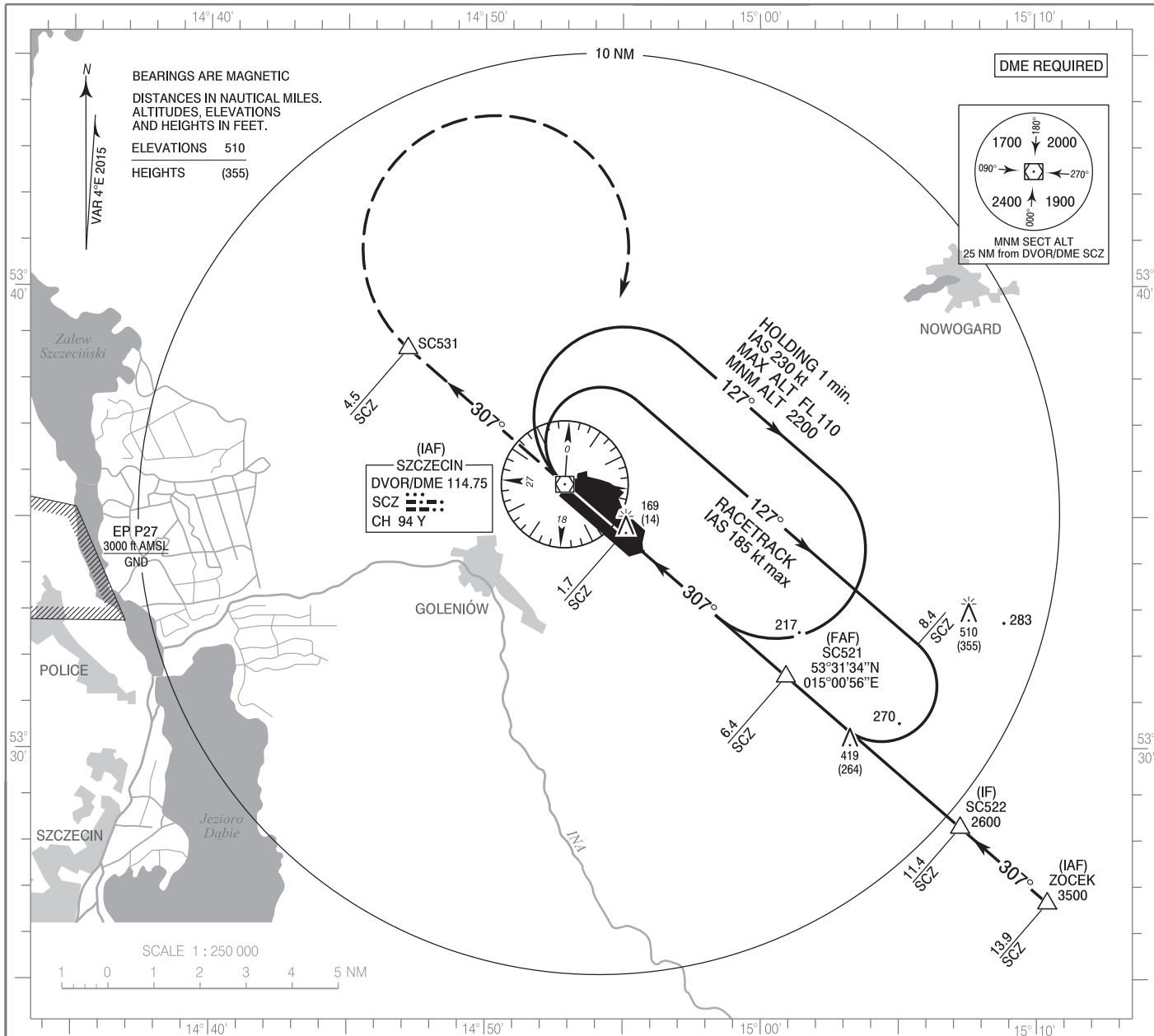


**INSTRUMENT
APPROACH
CHART - ICAO**

AERODROME ELEV 155 ft
THR RWY 31 ELEV 155 ft
HEIGHTS RELATED TO AD ELEV

Szczecin TOWER 121.255
ATIS 132.130

**Szczecin - Goleniów
VOR
RWY 31 (CAT A/B/C/D)**

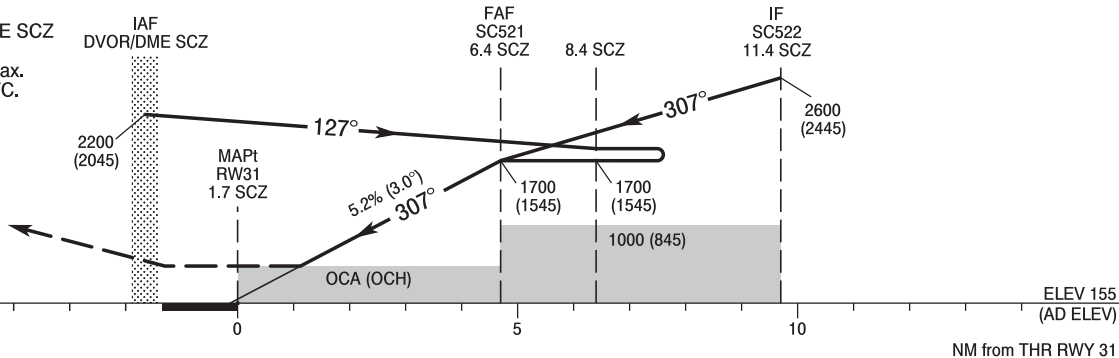


Correction: New procedure.

MISSED APPROACH

Climb on RDL 307° SCZ to SC531 (4,5 NM SCZ), then turn right to DVOR/DME SCZ climbing to 2200 (2045). Turn limited to 220 kt IAS max. Further instructions from ATC.

TRANSITION ALTITUDE 6500



SCALE 1 : 250 000

NM from THR RWY 31

Cat. of ACFT	OCA (OCH)				Speed	kt	Distance FAF - MAPt 4.7 NM					
	A	B	C	D			80	100	120	140	160	180
Straight - in	570 (415)	570 (415)	570 (415)	570 (415)	Time	min : s	3 : 32	2 : 49	2 : 21	2 : 01	1 : 46	1 : 34
					Rate of descent	ft / min	420	530	630	740	840	950
					Final approach distance/altitude (height)							
Circling	580 (425)	650 (495)	750 (595)	850 (695)	Distance		6	5	4	3		
					Altitude (height)		1590 (1435)	1270 (1115)	960 (805)	640 (485)		

**INSTRUMENT
APPROACH
CHART - ICAO**

**Szczecin - Goleniów
VOR
RWY 31 (CAT A/B/C/D)**

FIX / POINT	LATITUDE	LONGITUDE	FIX FORMATION	
IAF DVOR/DME SCZ	53°35'43.5"N	014°52'53.4"E		
IAF ZOCEK	53°26'39.3"N	015°10'24.1"E	130.87° GEO (127° MAG) DVOR SCZ	13.85 NM DME SCZ
IF SC522	53°28'17.8"N	015°07'14.9"E	130.87° GEO (127° MAG) DVOR SCZ	11.35 NM DME SCZ
FAF SC521	53°31'34.3"N	015°00'55.9"E	130°.87° GEO (127° MAG) DVOR SCZ	6.35 NM DME SCZ
MAPt RW31	53°34'38.6"N	014°54'59.3"E	130.88° GEO (127° MAG) DVOR SCZ	1.65 NM DME SCZ
SC531	53°38'39.6"N	014°47'10.9"E	310.89° GEO (307° MAG) DVOR SCZ	4.49 NM DME SCZ
Final approach descent angle: 3.00°				