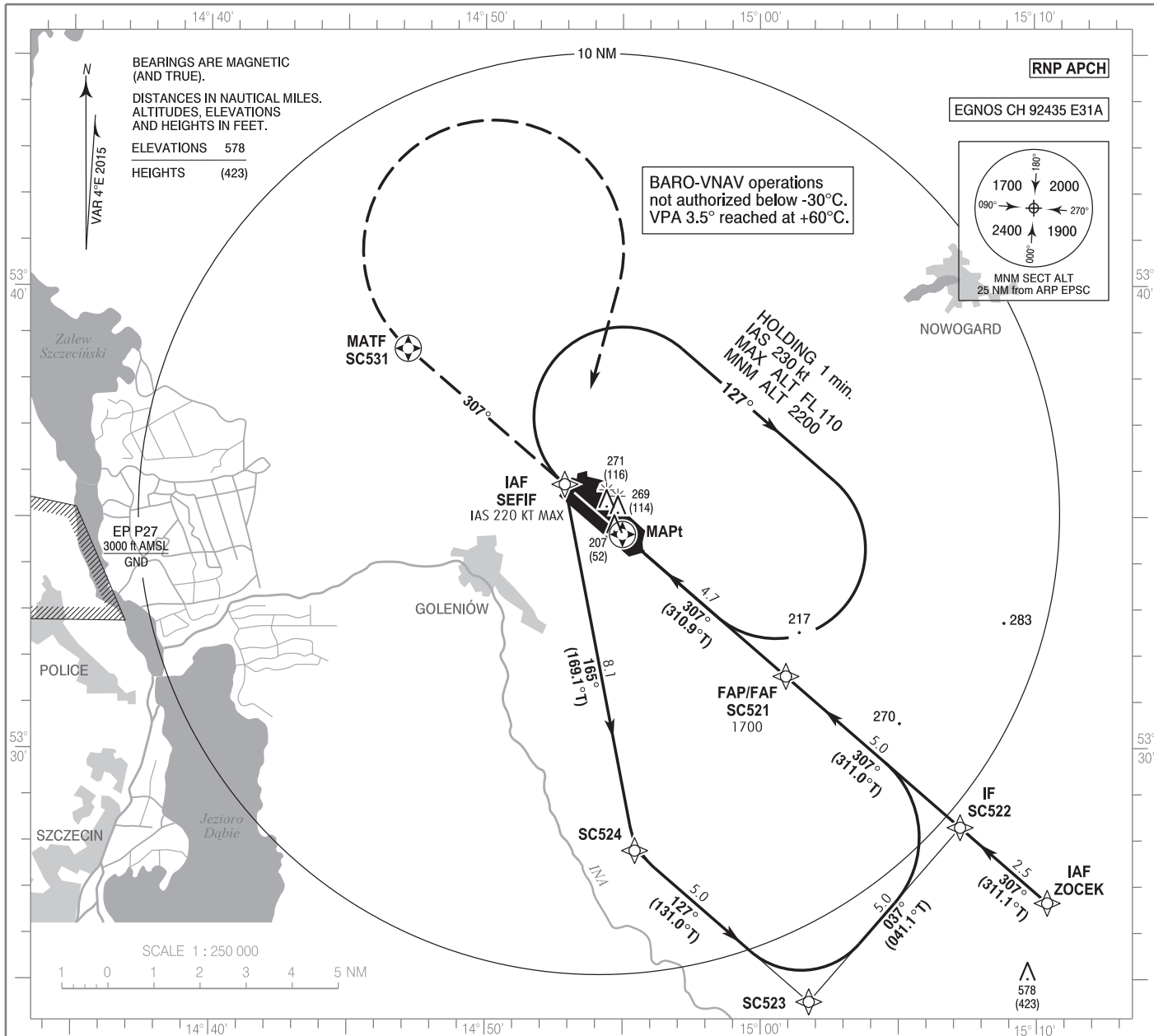


**INSTRUMENT
APPROACH
CHART - ICAO**

AERODROME ELEV 155 ft
THR RWY 31 ELEV 155 ft
HEIGHTS RELATED TO THR RWY 31

Szczecin TOWER 121.255
ATIS 132.130

**Szczecin - Goleniów
RNP
RWY 31 (CAT A/B/C/D)**

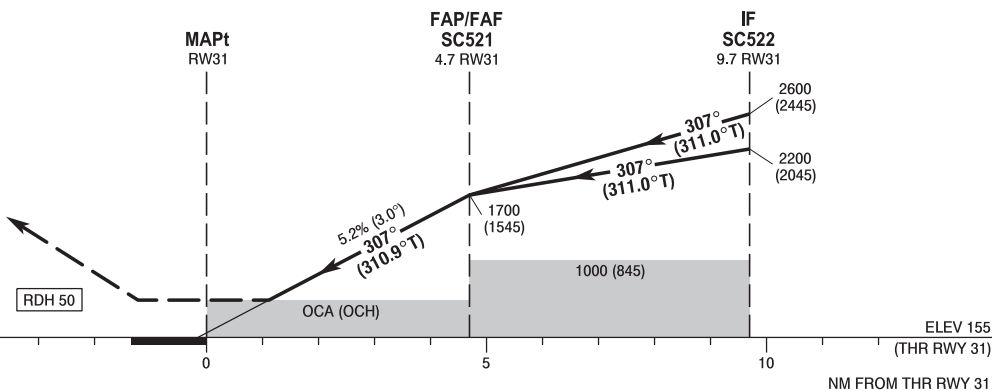


Correction: New procedure.

MISSED APPROACH

Climb on course 307° to SC531, then turn right to SEFIF climbing to 2200 (2045). Turn limited to 220 kt IAS max. Further instructions from ATC.

TRANSITION ALTITUDE 6500



SCALE 1 : 250 000

OCA (OCH)					Distance FAF - MAPt 4.7								
Cat. of ACFT		A	B	C	D	Speed	kt	80	100	120	140	160	180
		Straight - in	LNAV	560 (405)	560 (405)	560 (405)	560 (405)	Time	min : s	3 : 32	2 : 49	2 : 21	2 : 01
LNAV / VNAV	410 (255)		420 (265)	430 (275)	440 (285)	Rate of descent	ft / min	420	530	630	740	840	950
LPV	341 (186)		353 (198)	361 (206)	372 (217)			Final approach distance/altitude (height)					
Circling (OCH AAL)		580 (425)	650 (495)	750 (595)	850 (695)	Distance		4	3	2			
						Altitude (height)		1480 (1325)	1160 (1005)	850 (695)			

STRONA WOLNA

INTENTIONALLY LEFT BLANK

Szczecin - Goleniów
RNP
RWY 31 (CAT A/B/C/D)

EPSC RNP RWY 31 FROM ZOCEK

SEQUENCE NUMBER	PATH TERMINATOR	WAYPOINT IDENTIFIER	FLY - OVER	COURSE/TRACK °M (°T)	DISTANCE (NM)	TURN DIRECTION	ALTITUDE	SPEED (kt)	VPA/TCH	NAV SPEC
001	IF	ZOCEK	-	-	-	-	+3500 ft	-	-	RNP APCH
002	TF	SC522	-	307 (311.06)	2.50	-	+2600 ft	-	-	RNP APCH
003	TF	SC521	-	307 (310.98)	5.00	-	+1700 ft	-	-	RNP APCH
004	TF	RW31	Y	307 (310.90)	4.69	-	@205 ft	-	-3.0/50	RNP APCH
005	CF	SC531	Y	307 (310.90)	6.15	-	-	-220	-	RNP APCH
006	DF	SEFIF	-	-	-	R	+2200 ft	-220	-	RNP APCH

EPSC RNP RWY 31 FROM SEFIF

SEQUENCE NUMBER	PATH TERMINATOR	WAYPOINT IDENTIFIER	FLY - OVER	COURSE/TRACK °M (°T)	DISTANCE (NM)	TURN DIRECTION	ALTITUDE	SPEED (kt)	VPA/TCH	NAV SPEC
001	IF	SEFIF	-	-	-	-	+2200 ft	-220	-	RNP APCH
002	TF	SC524	-	165 (169.13)	8.08	L	+2200 ft	-220	-	RNP APCH
003	TF	SC523	-	127 (130.99)	5.00	L	+2200 ft	-220	-	RNP APCH
004	TF	SC522	-	037 (041.07)	5.00	L	+2200 ft	-220	-	RNP APCH
005	TF	SC521	-	307 (310.98)	5.00	-	+1700 ft	-	-	RNP APCH
006	TF	RW31	Y	307 (310.90)	4.69	-	@205 ft	-	-3.0/50	RNP APCH
007	CF	SC531	Y	307 (310.90)	6.15	-	-	-220	-	RNP APCH
008	DF	SEFIF	-	-	-	R	+2200 ft	-220	-	RNP APCH

WAYPOINT IDENTIFIER	COORDINATES	
ZOCEK (IAF)	53°26'39.3"N	015°10'24.1"E
SEFIF (IAF, MAHF)	53°35'43.5"N	014°52'53.4"E
SC524	53°27'48.1"N	014°55'26.8"E
SC523	53°24'31.8"N	015°01'45.6"E
SC522 (IF)	53°28'17.8"N	015°07'14.9"E
SC521 (FAP/FAF)	53°31'34.3"N	015°00'55.9"E
RW31 (MAPt)	53°34'38.6"N	014°54'59.3"E
SC531 (MATF)	53°38'39.6"N	014°47'10.9"E

SBAS FAS Data Block Coding Data

EPSC RNP RWY 31	
Input Data	
Parameters	Values
Operation Type:	0
SBAS Provider:	1 (EGNOS)
Airport Identifier:	EPSC
Runway:	31
Runway Direction:	0 (None)
Approach Performance Designator:	0
Route Indicator:	
Reference Path Data Selector:	0
Reference Path Identifier:	E31A
LTP/FTP Latitude:	533438.5665N
LTP/FTP Longitude:	0145459.2680E
LTP/FTP Ellipsoidal Height (metres):	82.5
FPAP Latitude:	533533.4385N
Delta FPAP Latitude (seconds):	54.8720
FPAP Longitude:	0145312.7545E
Delta FPAP Longitude (seconds):	-106.5135
Threshold Crossing Height:	50.0
TCH Units Selector:	0 (feet)
Glidepath Angle (degrees):	3.00
Course Width (metres):	105.00
Length Offset (metres):	88
HAL (metres):	40.0
VAL (metres):	35.0

Output Data	
Data Block	10 03 13 10 05 1F 00 00 01 31 33 05 CD 2F FE 16 88 C5 66 06 39 17 B0 AC 01 DD BF FC F4 01 2C 01 64 0B C8 AF ED C4 D2 AE
Calculated CRC Value	EDC4D2AE

Required Additional Data (not CRC wrapped)	
ICAO Code	SC
LTP/FTP Orthometric Height (metres)	47.4