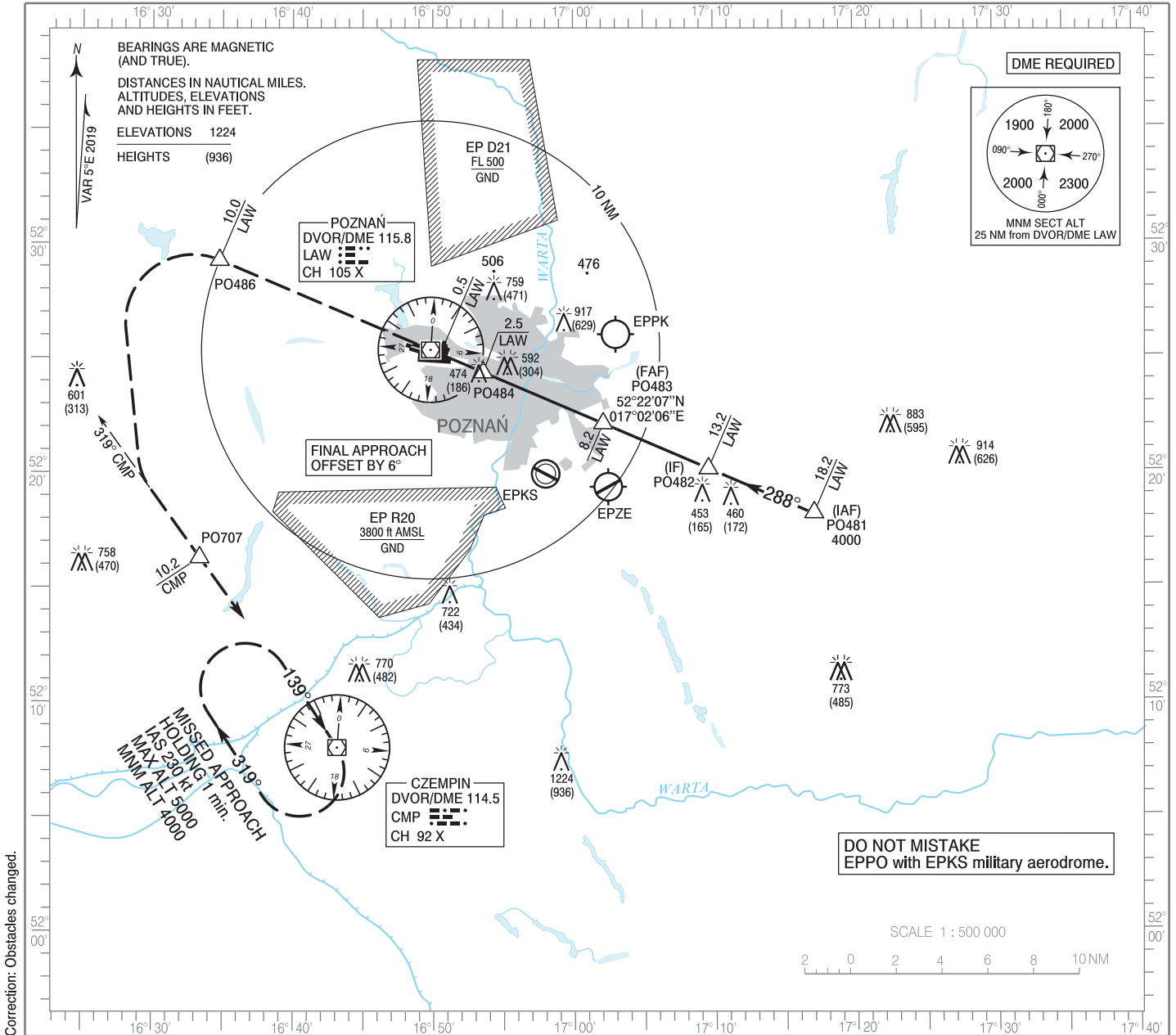


**INSTRUMENT
APPROACH
CHART - ICAO**

AERODROME ELEV 308 ft
THR RWY 28 ELEV 288 ft
HEIGHTS RELATED TO THR RWY 28

Poznań APPROACH 128.925
Poznań TOWER 119.980
ATIS 124.705

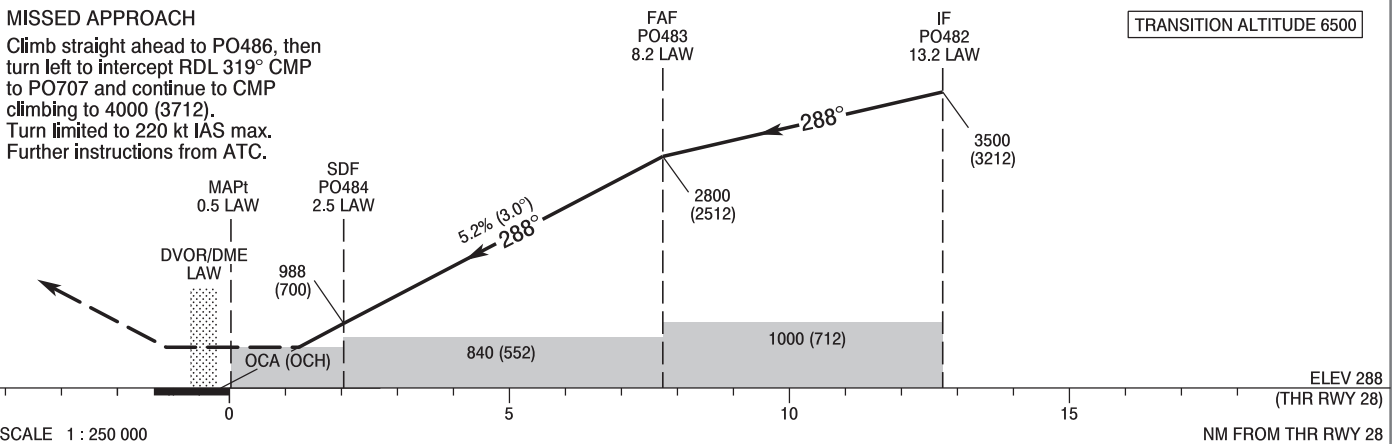
**Poznań - Ławica
VOR
RWY 28 (CAT A/B/C/D)**



Correction: Obstacles changed.

MISSED APPROACH

Climb straight ahead to PO486, then turn left to intercept RDL 319° CMP to PO707 and continue to CMP climbing to 4000 (3712). Turn limited to 220 kt IAS max. Further instructions from ATC.



SCALE 1 : 250 000 NM FROM THR RWY 28

Cat. of ACFT	OCA (OCH)				Distance FAF - MAPt 7.7 NM							
	A	B	C	D	Speed	kt	80	100	120	140	160	180
Straight - in	720 (432)	720 (432)	720 (432)	720 (432)	Time	min : s	5 : 48	4 : 39	3 : 52	3 : 19	2 : 54	2 : 35
	When stepdown fix not received				Rate of descent	ft/min	420	530	630	740	840	950
Circling (OCH AAL)	840 (532)	840 (532)	1160 (852)	1160 (852)	Final approach distance / altitude (height)							
	Distance	8	6	4	2	Altitude (height)	2740 (2452)	2110 (1822)	1470 (1182)	830 (542)		