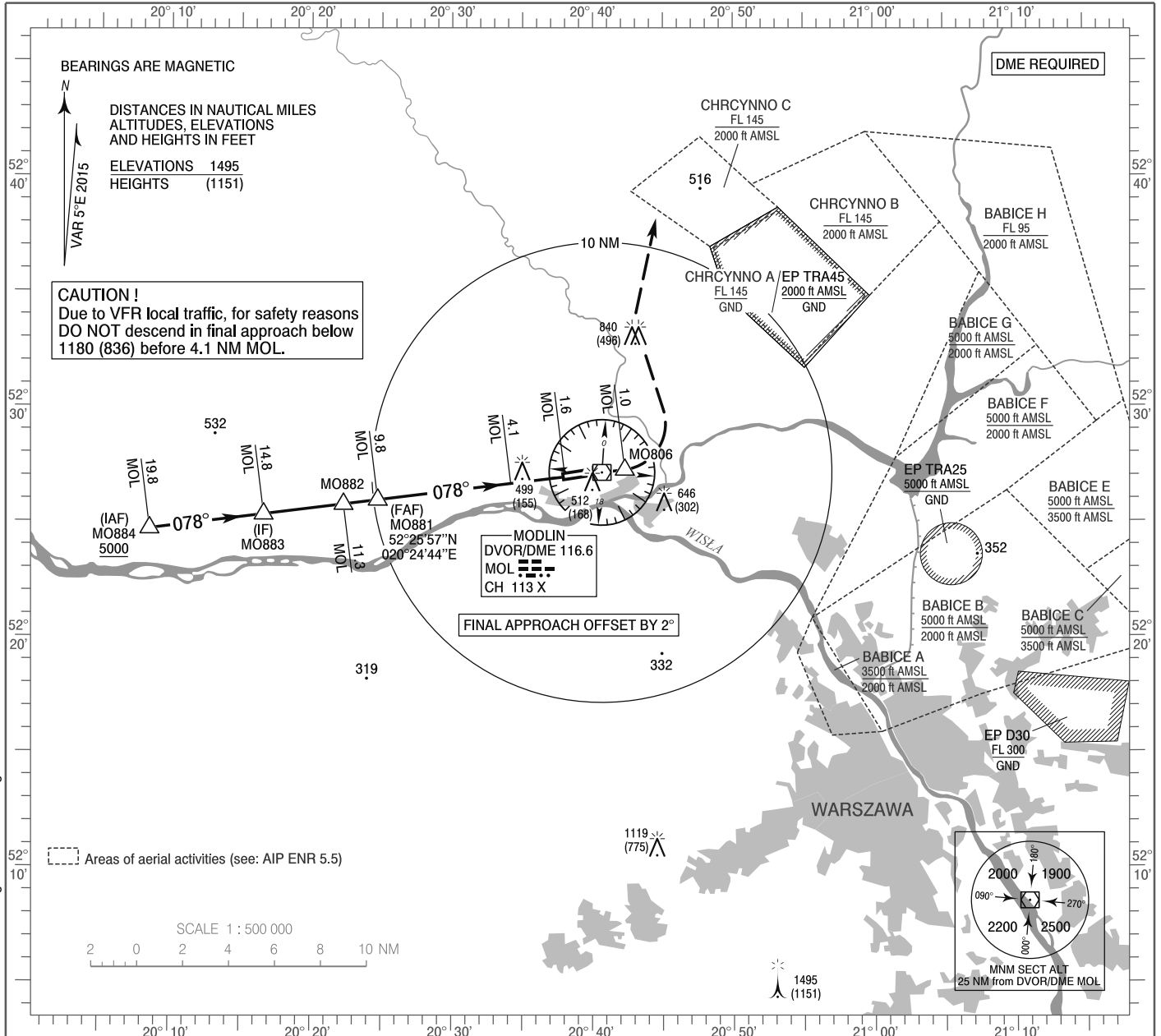


**INSTRUMENT
APPROACH
CHART - ICAO**

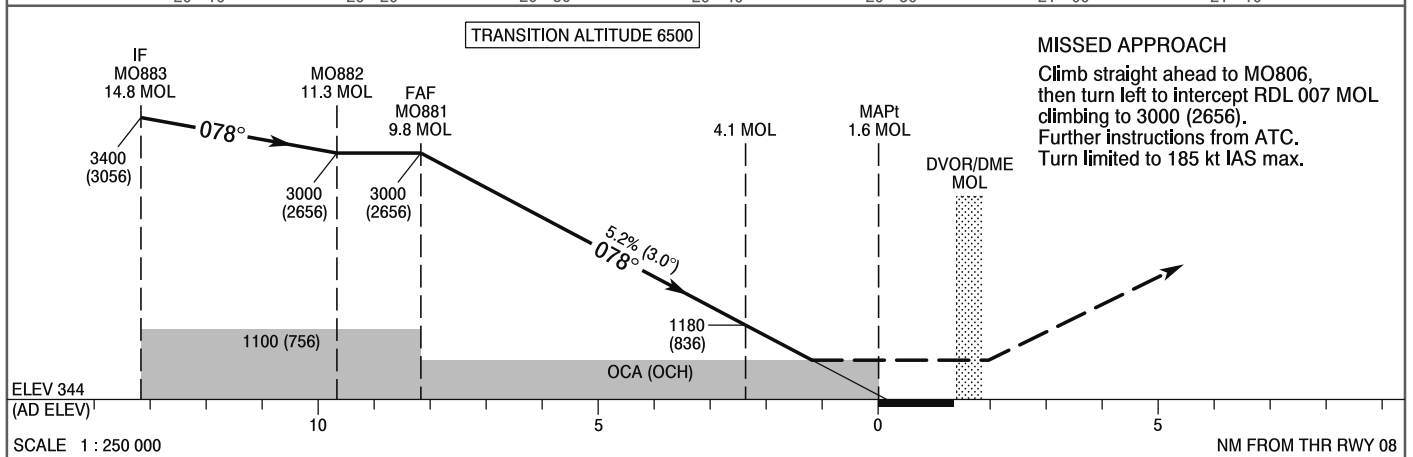
AERODROME ELEV 344 ft
THR RWY 08 ELEV 341 ft
HEIGHTS RELATED TO AD ELEV

Warszawa DIRECTOR 129.380
Warszawa APPROACH 125.055, 128.805
Modlin TOWER 123.930
Modlin INFORMATION 120.330

**Warszawa / Modlin
VOR
RWY 08 (CAT A/B/C/D)**



Correction: EP D30 changed. Editorial changes.



MISSED APPROACH
Climb straight ahead to MO806, then turn left to intercept RDL 007 MOL climbing to 3000 (2656). Further instructions from ATC. Turn limited to 185 kt IAS max.

OCA (OCH)					Distance FAF - MAPt 8.2 NM							
Cat. of ACFT	A	B	C	D	Speed	kt	80	100	120	140	160	180
Straight-in	750 (406)	750 (406)	750 (406)	750 (406)	Time	min : s	6 : 09	4 : 55	4 : 06	3 : 31	3 : 04	2 : 44
					Rate of descent	ft / min	430	530	640	750	850	960
					Final approach distance/altitude (height)							
Circling*	810 (466)	840 (496)	940 (596)	1040 (696)	Distance	7	6	5	4	3		
					Altitude (height)	2110 (1766)	1790 (1446)	1470 (1126)	1150 (806)	830 (486)		

**INSTRUMENT
APPROACH
CHART - ICAO**

**Warszawa / Modlin
VOR
RWY 08 (CAT A/B/C/D)**

FIX / POINT	LATITUDE	LONGITUDE	FIX FORMATION	
IAF MO884	52°24'41.5"N	020°08'31.9"E	263.09° GEO (258° MAG) DVOR MOL	19.82 NM DME MOL
IF MO883	52°25'19.4"N	020°16'37.9"E	263.09° GEO (258° MAG) DVOR MOL	14.82 NM DME MOL
MO882	52°25'45.6"N	020°22'18.3"E	263.09° GEO (258° MAG) DVOR MOL	11.32 NM DME MOL
FAF MO881	52°25'56.8"N	020°24'44.2"E	263.09° GEO (258° MAG) DVOR MOL	9.82 NM DME MOL
MAPt	52°26'56.8"N	020°38'01.6"E	263.09° GEO (258° MAG) DVOR MOL	1.63 NM DME MOL
MO806	52°27'15.7"N	020°42'17.3"E	083.09° GEO (078° MAG) DVOR MOL	1.00 NM DME MOL
Final approach descent angle: 3.00°				