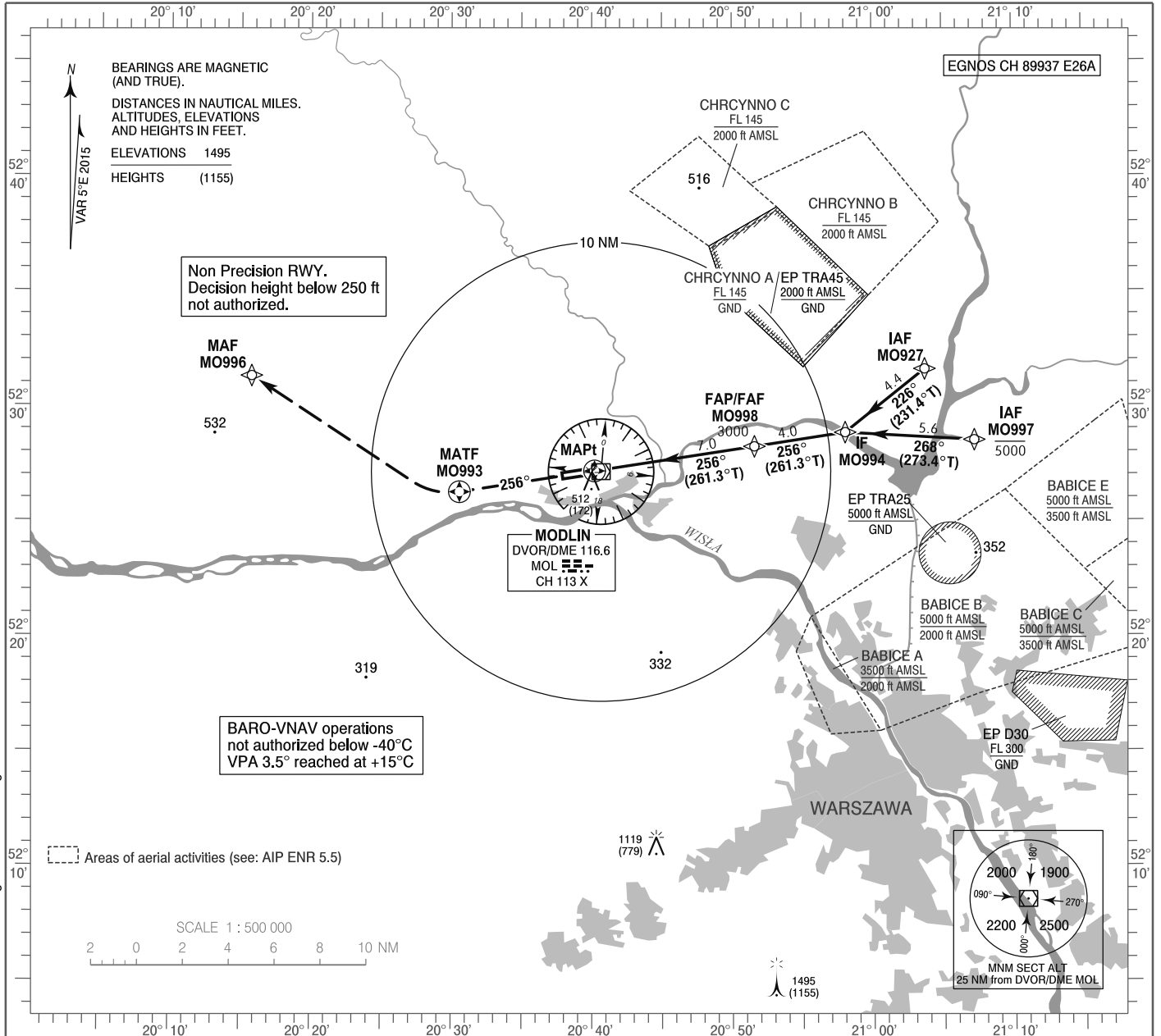


**INSTRUMENT  
APPROACH  
CHART - ICAO**

AERODROME ELEV 344 ft  
THR RWY 26 ELEV 340 ft  
HEIGHTS RELATED TO THR RWY 26

Warszawa DIRECTOR 129.380  
Warszawa APPROACH 125.055, 128.805  
Modlin TOWER 123.930  
Modlin INFORMATION 120.330

**Warszawa / Modlin  
RNAV (GNSS)  
RWY 26 (CAT A/B/C/D)**

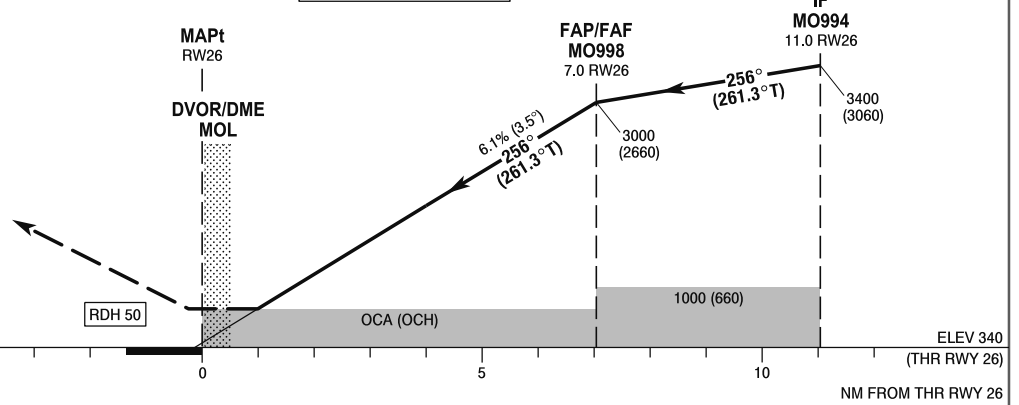


Correction: EP D30 changed. Editorial changes.

**MISSED APPROACH**

Climb straight ahead on course 256° to MO993, then turn right to MO996 climbing to 3000 (2660). Further instructions from ATC. Turn limited to 220 kt IAS max.

TRANSITION ALTITUDE 6500



SCALE 1 : 250 000

| OCA (OCH)            |                   | A         | B         | C         | D          | Distance FAF - MAPt 7.0 NM |          |   |             |            |        |        |        |
|----------------------|-------------------|-----------|-----------|-----------|------------|----------------------------|----------|---|-------------|------------|--------|--------|--------|
| Straight - in        | LNAV              | 760 (420) | 760 (420) | 760 (420) | 760 (420)  | Speed                      | kt       | 80  | 100         | 120        | 140    | 160    | 180    |
|                      | LNAV / VNAV 2.5%* | 680 (340) | 690 (350) | 700 (360) | 710 (370)  | Time                       | min : s  | 5 : 17                                    | 4 : 14      | 3 : 31     | 3 : 10 | 2 : 38 | 2 : 21 |
|                      | LNAV / VNAV 3.0%* | 620 (280) | 630 (290) | 640 (300) | 650 (310)  | Rate of descent            | ft / min | 500                                       | 620         | 750        | 870    | 990    | 1120   |
|                      | LPV 2.5%*         | 640 (300) | 654 (314) | 664 (324) | 677 (337)  |                            |          | Final approach distance/altitude (height) |             |            |        |        |        |
|                      | LPV 3.0%*         | 524 (184) | 538 (198) | 548 (208) | 561 (221)  |                            |          | Distance                                  | 6           | 4          | 2      |        |        |
| Circling (OCH AAL)** |                   | 810 (466) | 840 (496) | 940 (596) | 1040 (696) | Altitude (height)          |          | 2620 (2280)                               | 1880 (1540) | 1140 (800) |        |        |        |

\*MNM MA climb gradient \*\*Circling north of aerodrome only.