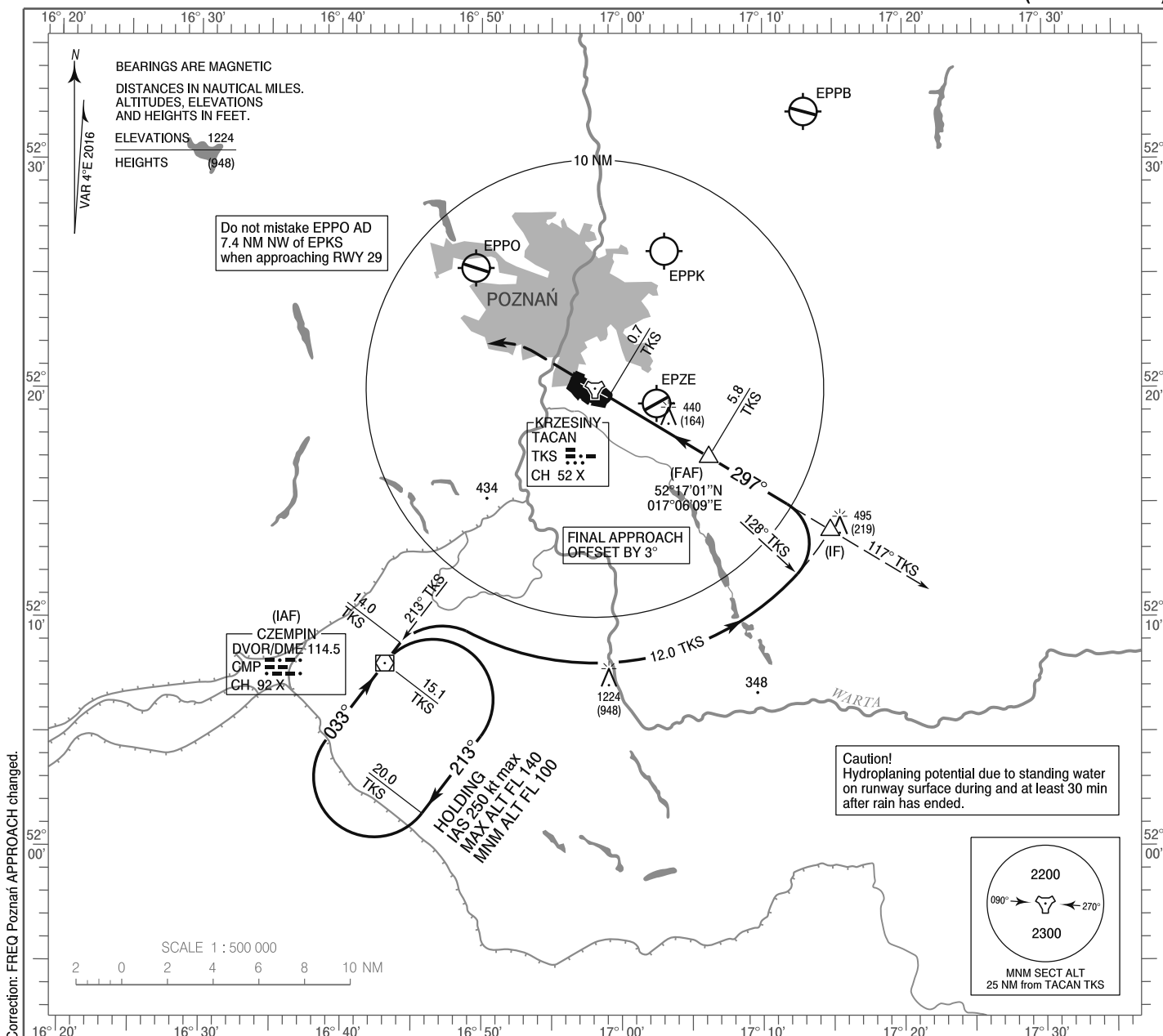


**INSTRUMENT
APPROACH
CHART - ICAO**

AERODROME ELEV 276 ft
THR RWY 29 ELEV 274 ft
HEIGHTS RELATED TO AD ELEV

Poznań APPROACH	129.030
Krzesiny GROUND	121.750
Krzesiny TOWER	121.025
ATIS	128.725

**POZNAŃ / Krzesiny
TACAN
RWY 29 (CAT A/B/C/D/E)**

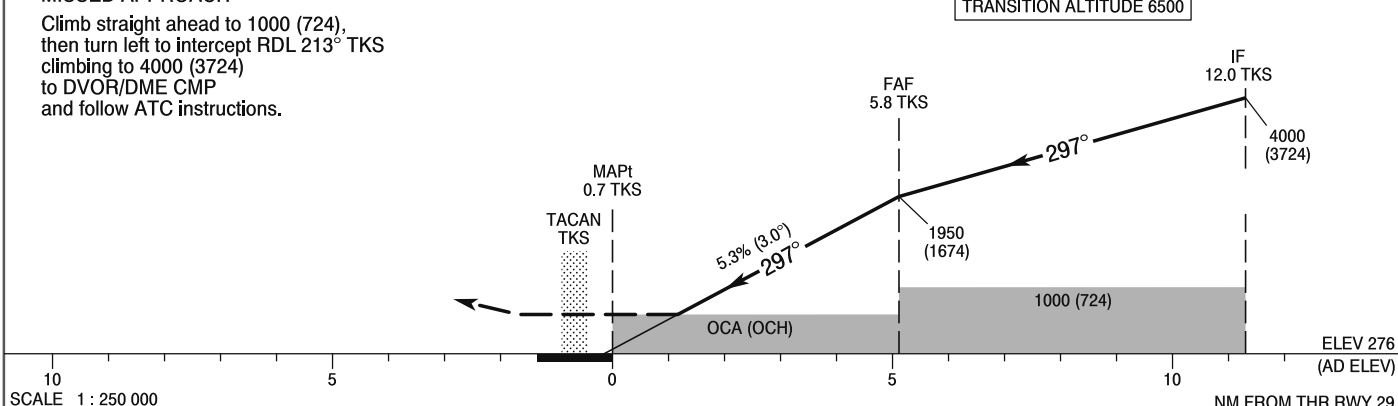


Correction: FREQ Poznań APPROACH changed.

MISSED APPROACH

Climb straight ahead to 1000 (724), then turn left to intercept RDL 213° TKS climbing to 4000 (3724) to DVOR/DME CMP and follow ATC instructions.

TRANSITION ALTITUDE 6500



SCALE 1 : 250 000

NM FROM THR RWY 29

Cat. of ACFT	OCA (OCH)					Distance FAF - MAPt 5.1 NM							
	A	B	C	D	E	Speed	kt	70	100	130	160	200	230
Straight - in	696 (420)	696 (420)	696 (420)	696 (420)	696 (420)	Time	min : s	4 : 22	3 : 03	2 : 21	1 : 54	1 : 31	1 : 19
						Rate of descent	ft / min	374	551	709	886	1102	1280
Circling*	696 (420)	776 (500)	1106 (830)	1106 (830)	1206 (930)								

*Circling south of the aerodrome only.

**INSTRUMENT
APPROACH
CHART - ICAO**

**POZNAŃ / Krzesiny
TACAN
RWY 29 (CAT A/B/C/D/E)**

FIX / POINT	LATITUDE	LONGITUDE	FIX FORMATION	
IAF DVOR/DME CMP	52°07'59.9"N	016°43'08.5"E		
IF	52°13'48.3"N	017°14'47.3"E	121.10° GEO (117° MAG) TACAN TKS	12.00 NM TACAN TKS
FAF	52°17'00.6"N	017°06'09.3"E	121.01° GEO (117° MAG) TACAN TKS	5.80 NM TACAN TKS
MAPt	52°19'38.2"N	016°59'02.2"E	121.00° GEO (117° MAG) TACAN TKS	0.70 NM TACAN TKS
Final approach descent angle: 3.00°				