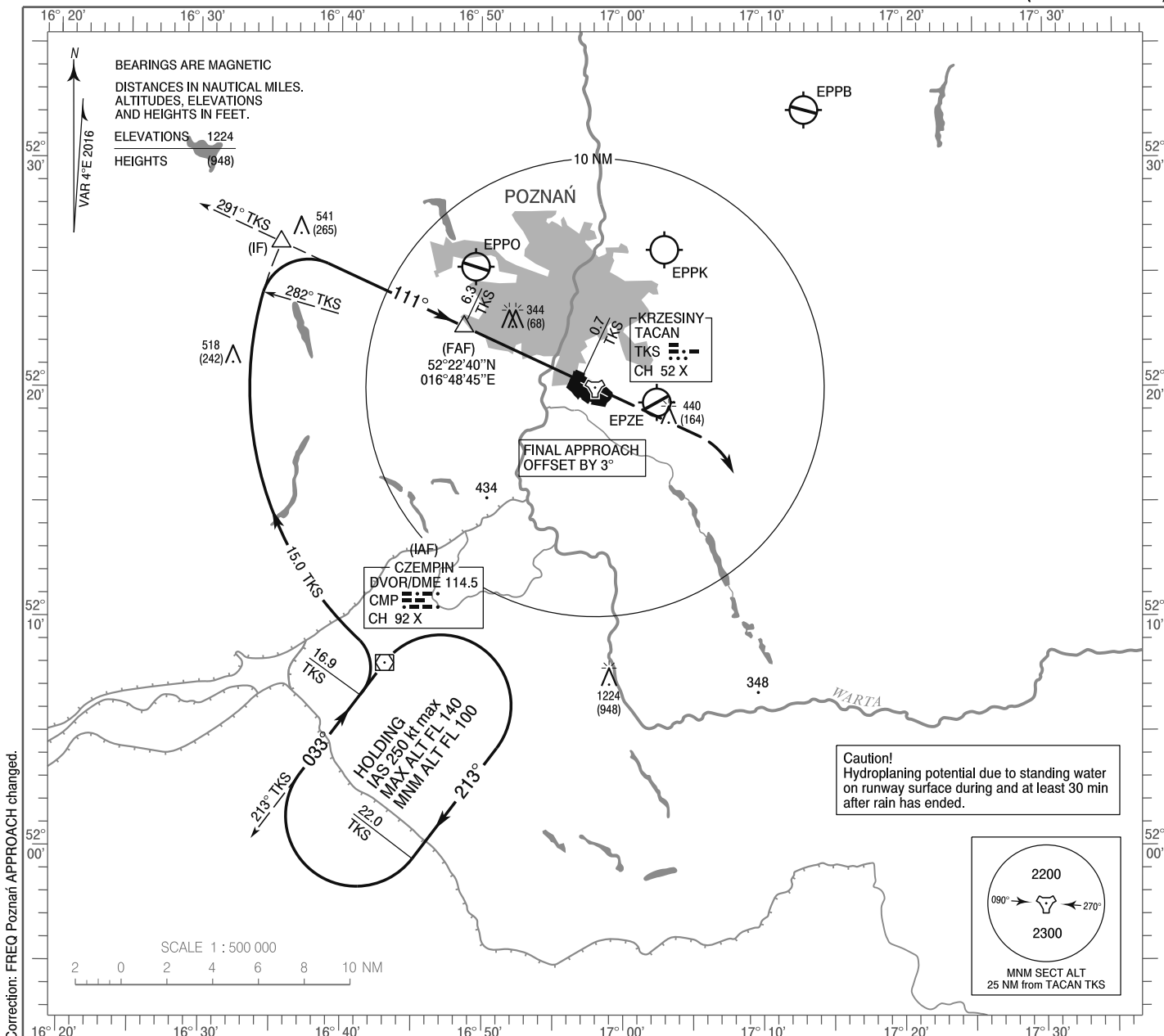


**INSTRUMENT
APPROACH
CHART - ICAO**

AERODROME ELEV 276 ft
THR RWY 11 ELEV 272 ft
HEIGHTS RELATED TO AD ELEV

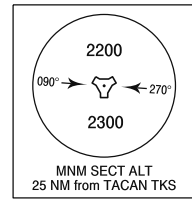
Poznań APPROACH 129.030
Krzesiny GROUND 121.750
Krzesiny TOWER 121.025
ATIS 128.725

**POZNAŃ / Krzesiny
TACAN
RWY 11 (CAT A/B/C/D/E)**



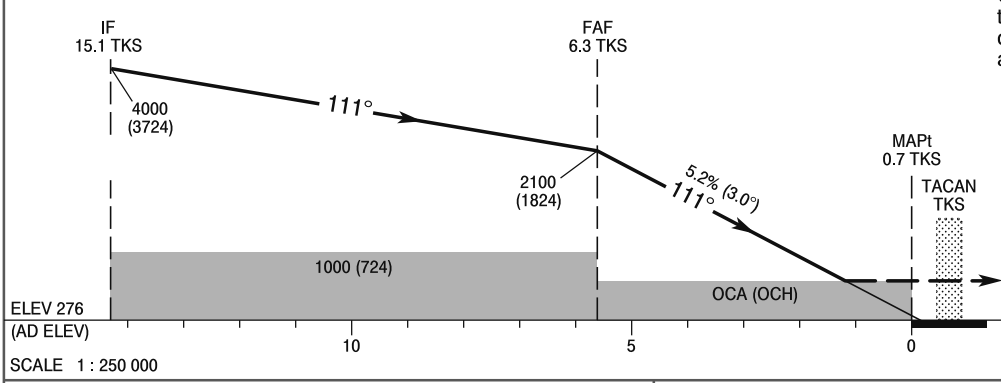
Correction: FREQ Poznań APPROACH changed.

Caution!
Hydroplaning potential due to standing water on runway surface during and at least 30 min after rain has ended.



TRANSITION ALTITUDE 6500

MISSED APPROACH
Climb straight ahead to 1000 (724), then turn right to intercept RDL 213° TKS climbing to 4000 (3724) to DVOR/DME CMP and follow ATC instructions



SCALE 1 : 250 000 NM FROM THR RWY 11

OCA (OCH)						Distance FAF - MAPt 5.6 NM							
Cat. of ACFT	A	B	C	D	E	Speed	kt	70	100	130	160	200	230
Straight - in	696 (420)	696 (420)	696 (420)	696 (420)	696 (420)	Time	min : s	4 : 41	3 : 16	2 : 32	2 : 01	1 : 38	1 : 25
						Rate of descent	ft / min	374	551	709	886	1102	1280
Circling*	696 (420)	776 (500)	1106 (830)	1106 (830)	1206 (930)								

*Circling south of the aerodrome only.

**INSTRUMENT
APPROACH
CHART - ICAO**

**POZNAŃ / Krzesiny
TACAN
RWY 11 (CAT A/B/C/D/E)**

FIX / POINT	LATITUDE	LONGITUDE	FIX FORMATION	
IAF DVOR/DME CMP	52°07'59.9"N	016°43'08.5"E		
IF	52°26'20.1"N	016°35'41.8"E	294.87° GEO (291° MAG) TACAN TKS	15.11 NM TACAN TKS
FAF	52°22'39.6"N	016°48'44.5"E	294.98° GEO (291° MAG) TACAN TKS	6.30 NM TACAN TKS
MAPt	52°20'17.6"N	016°57'01.5"E	295.00° GEO (291° MAG) TACAN TKS	0.70 NM TACAN TKS
Final approach descent angle: 3.00°				