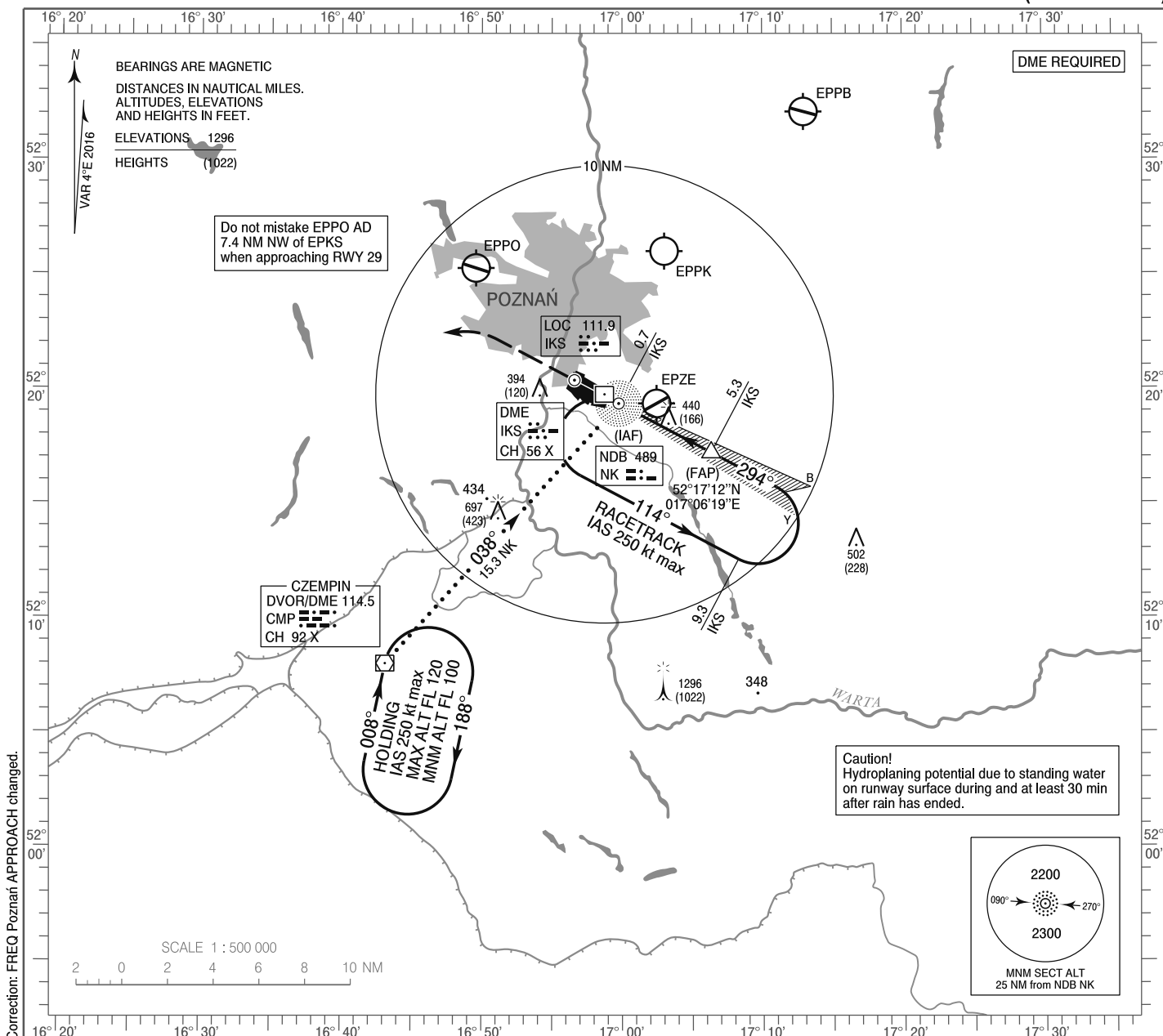


**INSTRUMENT
APPROACH
CHART - ICAO**

AERODROME ELEV 276 ft
THR RWY 29 ELEV 274 ft
HEIGHTS RELATED TO THR RWY 29

Poznań APPROACH 129.030
Krzesiny GROUND 121.750
Krzesiny TOWER 121.025
ATIS 128.725

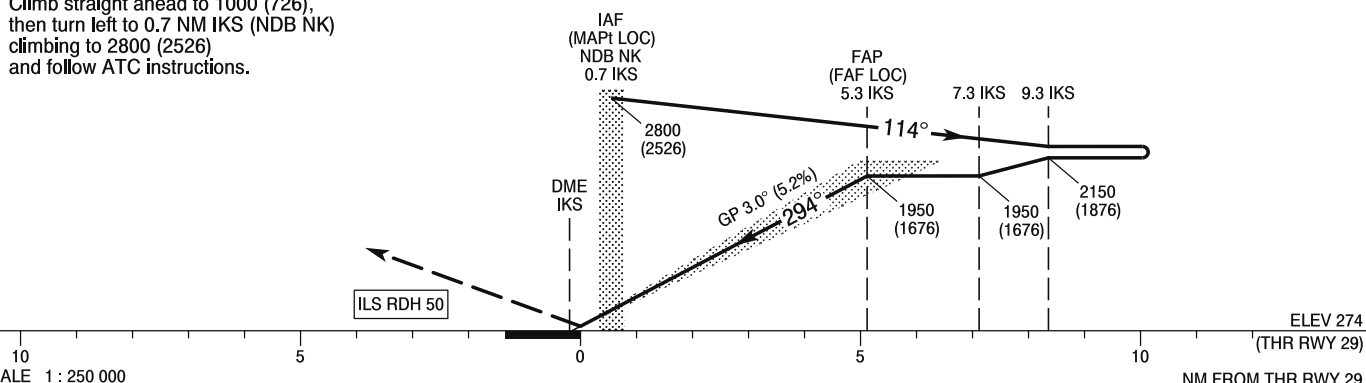
**POZNAŃ / Krzesiny
ILS z or LOC z
RWY 29 (CAT A/B/C/D/E)**



Correction: FREQ Poznań APPROACH changed.

MISSED APPROACH
Climb straight ahead to 1000 (726),
then turn left to 0.7 NM IKS (NDB NK)
climbing to 2800 (2526)
and follow ATC instructions.

TRANSITION ALTITUDE 6500



SCALE 1 : 250 000 NM FROM THR RWY 29

Cat. of ACFT	OCA (OCH)					Speed	Distance FAF - MAPt 4.6 NM							
	A	B	C	D	E		kt	75	100	135	170	200	230	
Straight - in	Cat.I	504 (230)	514 (240)	514 (240)	524 (250)	544 (270)	Time	min : s	3 : 41	2 : 44	2 : 00	1 : 34	1 : 19	1 : 08
	LOC	634 (360)	634 (360)	634 (360)	634 (360)	634 (360)	Rate of descent	ft / min	394	531	709	905	1063	1220
Circling* (OCH AAL)		676 (400)	776 (500)	1106 (830)	1106 (830)	1206 (930)								

**INSTRUMENT
APPROACH
CHART - ICAO**

POZNAŃ / Krzesiny
ILS z or LOC z
RWY 29 (CAT A/B/C/D/E)

FIX / POINT	LATITUDE	LONGITUDE	FIX FORMATION	
IAF NDB NK	52°19'20.9"N	016°59'45.2"E		
FAP (FAF LOC)	52°17'12.4"N	017°06'18.9"E	298.05° GEO (294° MAG) LOC IKS	5.30 NM DME IKS
MAPt (LOC)	52°19'20.9"N	016°59'45.2"E	298.05° GEO (294° MAG) LOC IKS	0.73 NM DME IKS
Final approach descent angle: 3.00°				