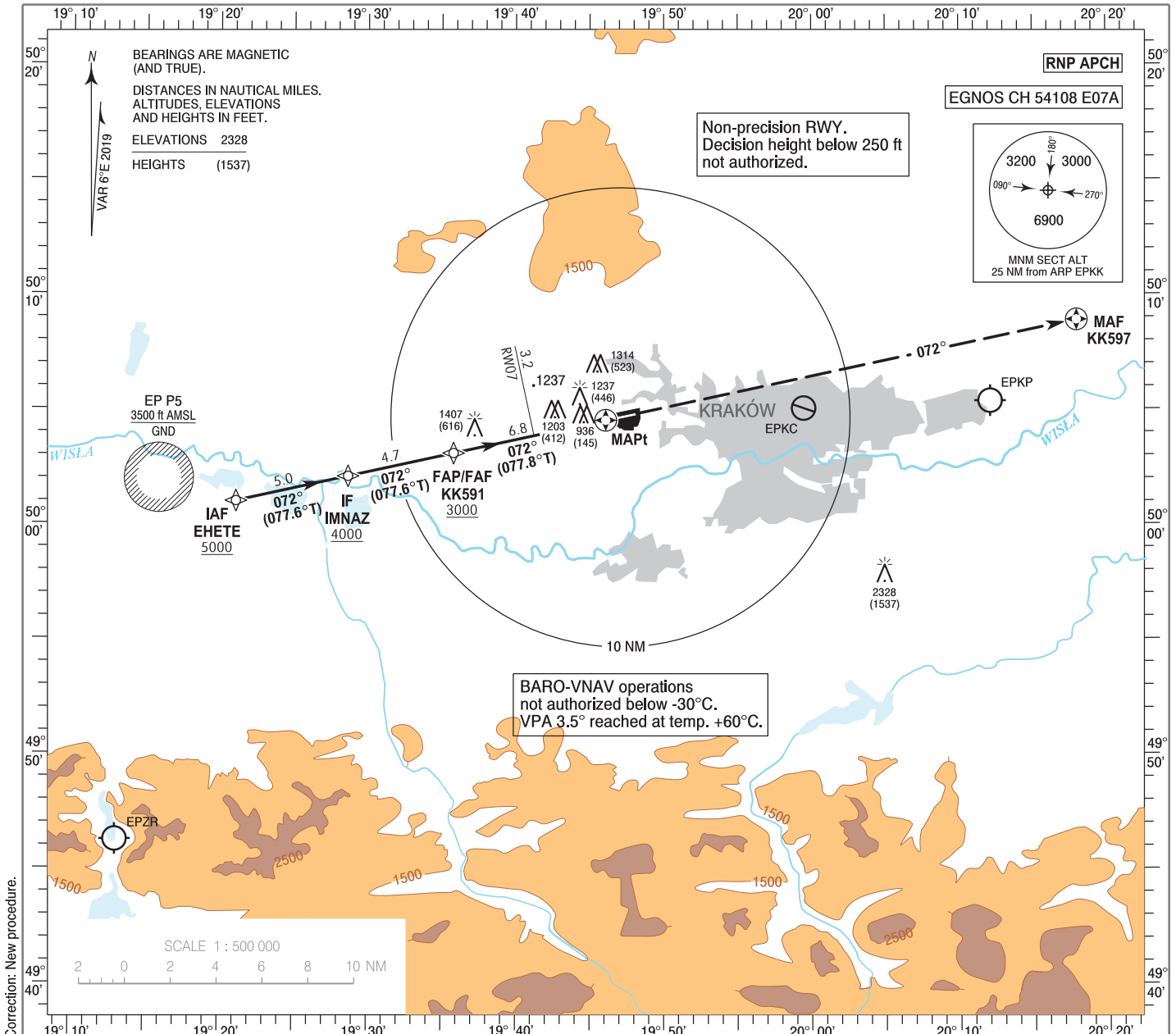


**INSTRUMENT  
APPROACH  
CHART - ICAO**

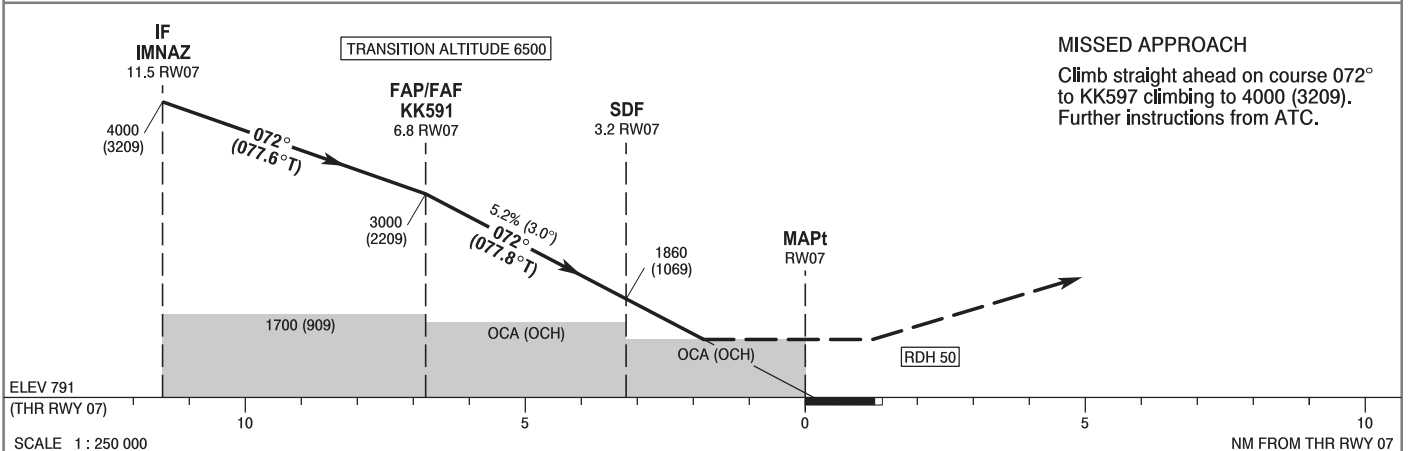
AERODROME ELEV 791 ft  
THR RWY 07 ELEV 791 ft  
HEIGHTS RELATED TO THR RWY 07

Kraków APPROACH 121.075, 135.405  
Kraków TOWER 123.255  
ATIS 126.130, 112.800

**Kraków - Balice  
RNP  
RWY 07 (CAT A/B/C/D)**



Correction: New procedure.



		OCA (OCH)				Distance FAF - MAPt 6.8 NM							
Cat. of ACFT		A	B	C	D	Speed	kt	80	100	120	140	160	180
		Straight - in	LNAV	1420 (629)	1420 (629)	1420 (629)	1420 (629)	Time	min : s	5 : 06	4 : 05	3 : 24	2 : 55
When stepdown fix not received				Rate of descent	ft / min	420	530	630	740	840	950		
LNAV / VNAV	1370 (579)		1380 (589)	1390 (599)	1400 (609)	Final approach distance/altitude (height)							
LPV	991 (200)		1003 (212)	1011 (220)	1022 (231)	Distance		6	5	4	3		
ACFT Cat C and D circling north of aerodrome only		1610 (819)	1620 (829)	1740 (949)	1960 (1169)	Altitude (height)		2760 (1969)	2440 (1649)	2120 (1329)	1800 (1009)		

**Kraków - Balice**  
**RNP**  
**RWY 07 (CAT A/B/C/D)**

**EPKK RNP RWY 07**

SEQUENCE NUMBER	PATH TERMINATOR	WAYPOINT IDENTIFIER	FLY - OVER	COURSE/TRACK °M (°T)	DISTANCE (NM)	TURN DIRECTION	ALTITUDE	SPEED (kt)	VPA/TCH	NAV SPEC
001	IF	EHETE	-	-	-	-	+5000 ft	-	-	RNP APCH
002	TF	IMNAZ	-	072 (077.55)	5.00	-	+4000 ft	-	-	RNP APCH
003	TF	KK591	-	072 (077.64)	4.70	-	+3000 ft	-	-	RNP APCH
004	TF	RW07	Y	072 (077.78)	6.78	-	@841 ft	-	-3.0°/50	RNP APCH
005	CF	KK597	Y	072 (078.19)	20.97	-	+4000 ft	-	-	RNP APCH

WAYPOINT IDENTIFIER	COORDINATES	
EHETE (IAF)	50°00'59.6"N	019°21'06.8"E
IMNAZ (IF)	50°02'04.5"N	019°28'41.0"E
KK591 (FAP/FAF)	50°03'05.0"N	019°35'48.3"E
RW07 (MAPt)	50°04'31.4"N	019°46'05.1"E
KK597 (MAF)	50°08'53.0"N	020°17'56.8"E