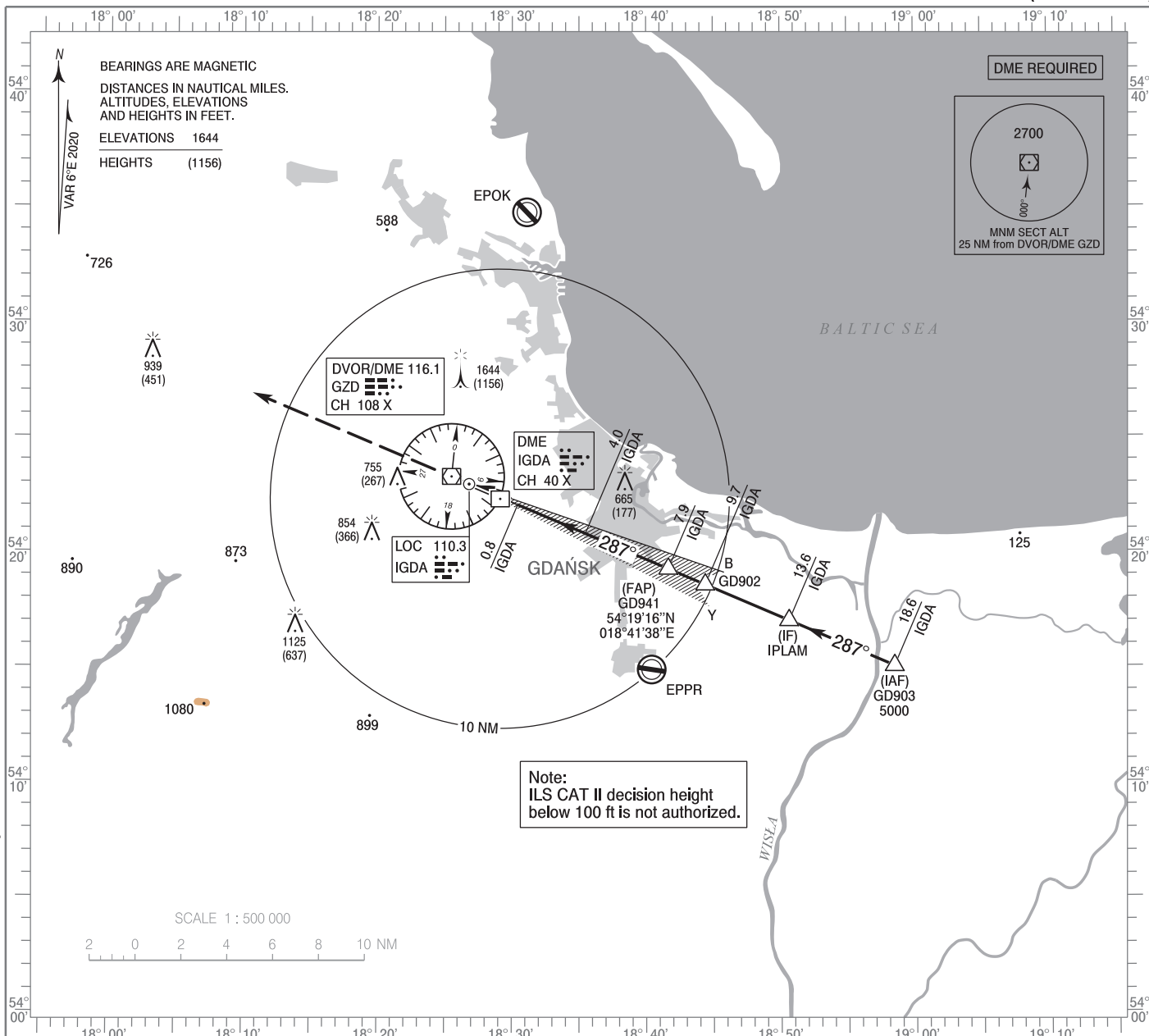


**INSTRUMENT  
APPROACH  
CHART - ICAO**

AERODROME ELEV 489 ft  
THR RWY 29 ELEV 488 ft  
HEIGHTS RELATED TO THR RWY 29

Gdańsk DIRECTOR 133.660  
Gdańsk APPROACH 127.280  
Gdańsk TOWER 118.105  
ATIS 129.630

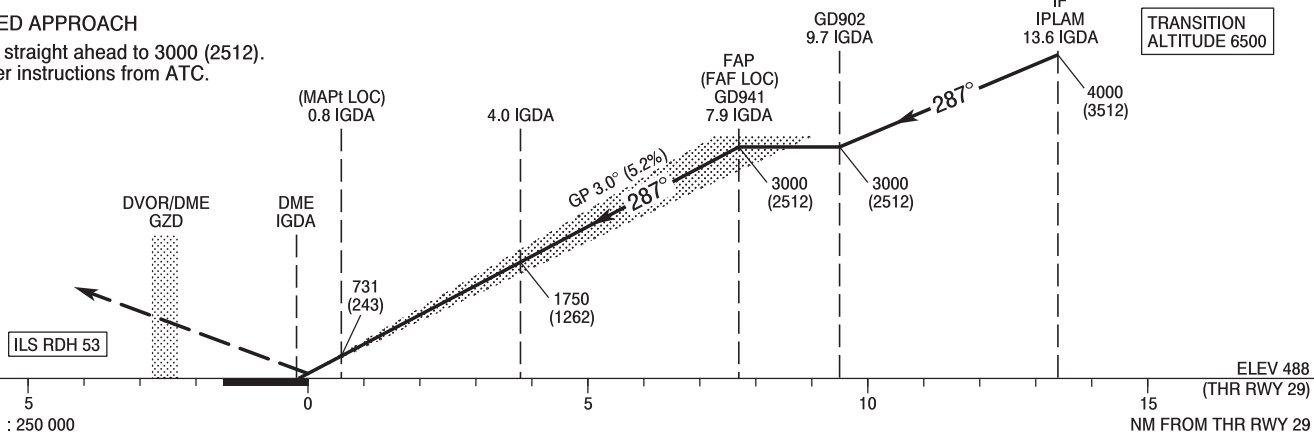
**GDĄŃSK Lech Wałęsa  
ILS CAT II or LOC  
RWY 29 (CAT A/B/C/D)**



Correction: VAR, MAG, BRG changed.

**MISSED APPROACH**

Climb straight ahead to 3000 (2512).  
Further instructions from ATC.



ELEV 488 (THR RWY 29)

SCALE 1 : 250 000

OCA (OCH)					Distance FAF - MAPt 7.1 NM								
Cat. of ACFT		A	B	C	D	Speed	kt	80	100	120	140	160	180
		Straight - in	Cat. I	689 (201)	701 (213)	709 (221)	720 (232)	Time	min : s	5 : 21	4 : 16	3 : 34	3 : 03
Cat. II 2.5%	632 (144)		649 (161)	661 (173)	675 (187)	Rate of descent	ft / min	425	531	637	743	849	955
Cat. II 3.0%	557 (69)		574 (86)	586 (98)	600 (112)								
LOC	810 (322)		810 (322)	810 (322)	810 (322)	Final approach distance/altitude (height)							
Circling (OCH AAL)*		960 (471)	990 (501)	1160 (671)	1250 (761)	Distance		7	6	5	4		
*ACFT cat. D circling south of aerodrome only.						Altitude (height)		2710 (2222)	2390 (1902)	2070 (1582)	1750 (1262)		

**INSTRUMENT  
APPROACH  
CHART - ICAO**

**GDAŃSK Lech Walesa  
ILS CAT II or LOC  
RWY 29 (CAT A/B/C/D)**

<b>FIX / POINT</b>	<b>LATITUDE</b>	<b>LONGITUDE</b>	<b>FIX FORMATION</b>	
<b>IAF GD903</b>	<b>54°15'02.5"N</b>	<b>018°58'26.8"E</b>	<b>293.34° GEO (287° MAG) LOC IGDA</b>	<b>18.65 NM DME IGDA</b>
<b>IF IPLAM</b>	<b>54°17'00.8"N</b>	<b>018°50'37.0"E</b>	<b>293.23° GEO (287° MAG) LOC IGDA</b>	<b>13.65 NM DME IGDA</b>
<b>GD902</b>	<b>54°18'34.5"N</b>	<b>018°44'23.3"E</b>	<b>293.15° GEO (287° MAG) LOC IGDA</b>	<b>9.68 NM DME IGDA</b>
<b>FAP (FAF LOC) GD941</b>	<b>54°19'15.7"N</b>	<b>018°41'38.3"E</b>	<b>293.12° GEO (287° MAG) LOC IGDA</b>	<b>7.92 NM DME IGDA</b>
<b>MAPt (LOC)</b>	<b>54°22'02.7"N</b>	<b>018°30'26.2"E</b>	<b>292.97° GEO (287° MAG) LOC IGDA</b>	<b>0.80 NM DME IGDA</b>
<b>Final approach descent angle: 3.00°</b>				