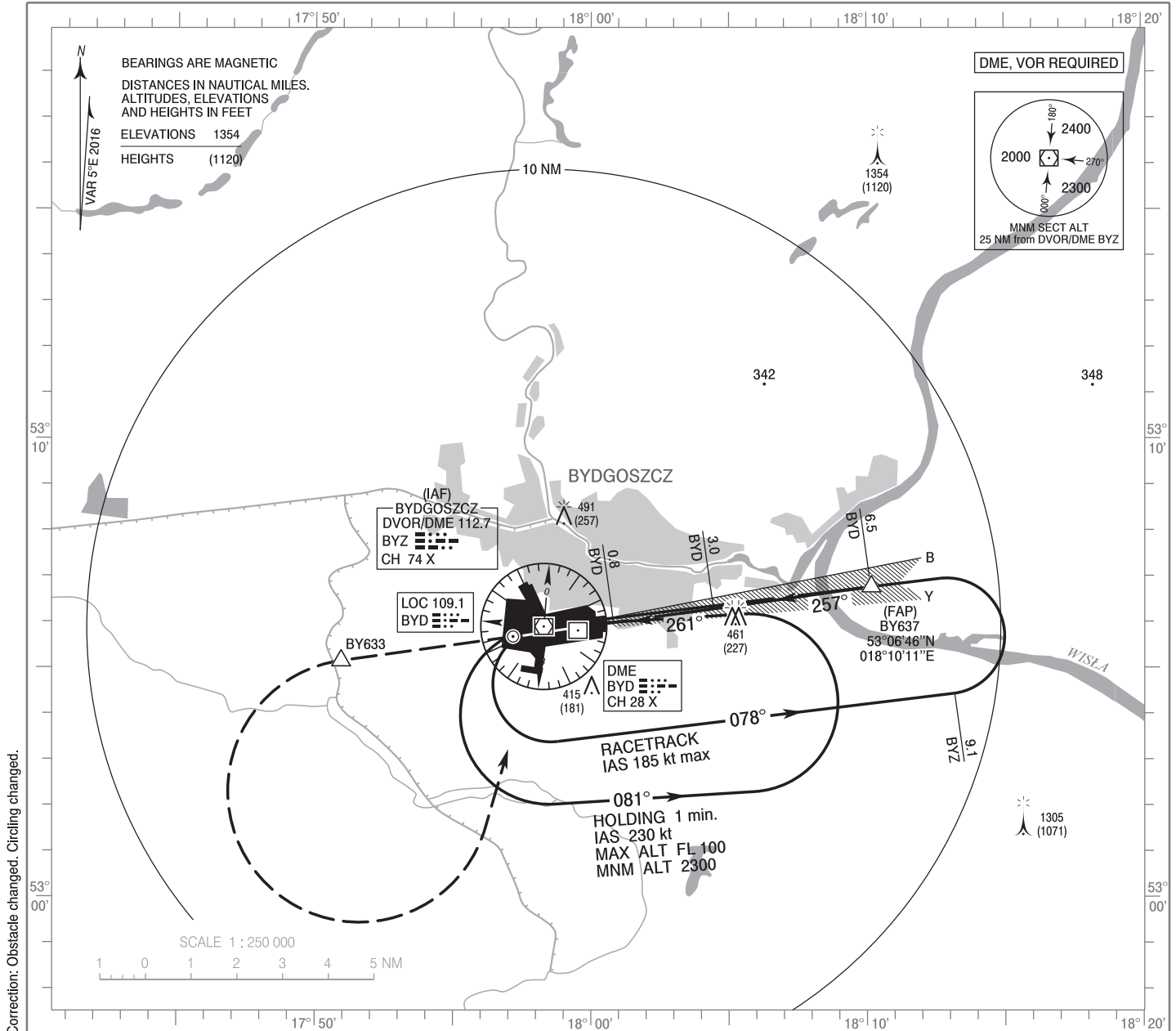


**INSTRUMENT
APPROACH
CHART - ICAO**

AERODROME ELEV 236 ft
THR RWY 26 ELEV 234 ft
HEIGHTS RELATED TO THR RWY 26

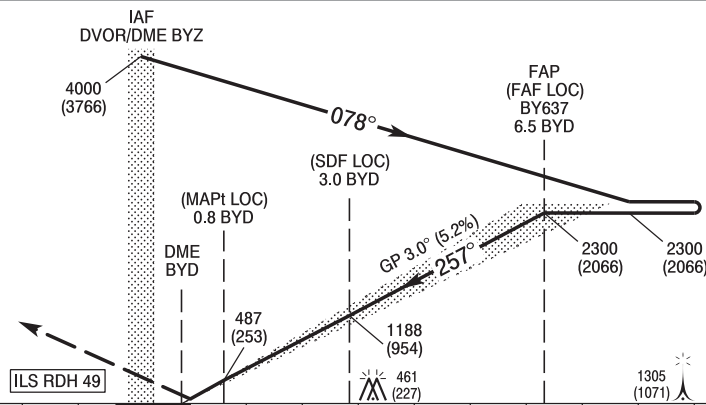
Bydgoszcz TOWER 131.005

**Bydgoszcz
ILS y or LOC y
RWY 26 (CAT A/B/C/D)**



Correction: Obstacle changed. Circling changed.

MISSED APPROACH
Climb straight ahead to BY633, then turn left to DVOR/DME BYZ and join holding at BYZ climbing to 2300 (2066). Turn limited to 220 kt IAS max.



SCALE 1 : 250 000

OCA (OCH)					Distance FAF - RW26 6.3 NM								
Cat. of ACFT	Cat. I	A	B	C	D	Speed	kt	80	100	120	140	160	180
		Straight - in	LOC	600 (366)	600 (366)	600 (366)	600 (366)	Time	min : s	4 : 46	3 : 49	3 : 11	2 : 43
When stepdown fix not received				710 (476)	710 (476)	Rate of descent	ft / min	420	530	630	740	840	950
Circling (OCH AAL)					710 (474)	790 (554)	Final approach distance/altitude (height)						
					890 (654)	930 (694)	Distance		5	4	3	2	
						Altitude (height)		1830 (1596)	1510 (1276)	1190 (956)	870 (636)		

**INSTRUMENT
APPROACH
CHART - ICAO**

Bydgoszcz
ILS y or LOC y
RWY 26 (CAT A/B/C/D)

FIX / POINT	LATITUDE	LONGITUDE	FIX FORMATION	
IAF DVOR/DME BYZ	53°05'54.3"N	017°58'18.2"E		
FAP (FAF LOC) BY637	53°06'46.1"N	018°10'10.9"E	262.02° GEO (257° MAG) LOC BYD	6.49 NM DME BYD
SDF (LOC)	53°06'17.5"N	018°04'26.5"E	262.02° GEO (257° MAG) LOC BYD	3.00 NM DME BYD
MAPt (LOC)	53°05'59.4"N	018°00'49.4"E	262.02° GEO (257° MAG) LOC BYD	0.80 NM DME BYD
BY633	53°05'07.6"N	017°50'36.9"E	260.51° GEO (256° MAG) DVOR BYZ	4.70 NM DME BYZ
Final approach descent angle: 3.00°				